

CITY OF PETERSBURG

Park & Recreation Master Plan 2024-2029



CITY OF PETERSBURG

Park & Recreation Master Plan

2024-2029

Petersburg Park and Recreation Board
704 E Main Street
Petersburg, IN 47567
812-354-8511
pbcity@blueriver.net

Prepared by:

INDIANA 15
REGIONAL
PLANNING COMMISSION

221 E First Street, Ferdinand, IN 47532
812-367-8455
www.ind15rpc.org

Cheri Taylor
Financial Administrator

Lindsey Hoffman
Administrative Assistant

IDNR Approval Letter	4
Introduction	5
Park and Recreation Board	6
Planning Area Map	7
Budget	8
Goals and Objectives	9
Adoption of Master Plan	10
Features of the Community	11
History	12
Aquifers, Subwatersheds, Floodplains and Wetlands	13
Natural Features	14
Park Potential	15
Man-made Features	16
Cultural Features	17
Population and Culture	18
Economic Factors	20
Income	23
Poverty	24
Existing Park Inventory	25
City of Petersburg	26
Schools	26
Federal	27
State	27
Local	28
Private-Local	29
Private-County	29
Evansville	30
Accessibility	31
ADA Coordinator	32
Assurance of Compliance	32
Self Evaluation	33
ADA Complaint/Grievance Procedure	34
ADA Complaint/Grievance Form	35
Accessibility Resources	36



Public Input	37
Survey & Focus Groups	38
Survey Results	39
Press Articles	49
Public Hearing	51
Needs Analysis	53
Needs Analysis	54
Maps	55
City of Petersburg	56
Existing Facilities	57
Hornady Park	58
Trails	59
Existing & Potential Connectivity	60
Petersburg Floodplain	61
Petersburg Topography	62
Project Priorities Listing	63
Action Plan Schedule	64
Appendix	65
Survey	66
Sources	82

IDNR Approval Letter

Introduction



Park and Recreation Board

The City of Petersburg Board of Park Trustees was established December 7, 1925 by Ordinance 22. This ordinance was repealed on February 16, 1931 by Ordinance 60 creating a Board of Trustees for management and control of Hornady Park. Then in 1995 an ordinance was created to re-establish a park board under the provisions of IC 36-10-3.

The Petersburg Park Board consists of four members serving a four year term appointed by the Mayor on the basis of their interest in and knowledge of parks and recreation. No more than two members of the same political party can serve on the Board. Members of the Petersburg Park Board consist of:

Matt Robinette, President
Term Expires: 12/31/2027
1214 East Spruce Street
Petersburg, IN 47567
812-582-2533
mrobinette@petersburg.in.gov

Jodie Elkins, Vice-President
Term Expires: 12/31/2027
226 N Arrowhead Drive
Petersburg, IN 47567
812-789-3280
jelkins@pcsc.k12.in.us

Tom Fisher, Member
Term Expires: 12/31/2026
4158 N. Hornady Park Lane
Petersburg, IN 47567
812-457-2844

Terry Wornica, Member
Term Expires: 12/31/2027
156 N Whitelock Avenue, Apt 16
Petersburg, IN 47567
812-582-3076

The Park Board operates out of the City offices of Petersburg. The Clerk-Treasurer takes minutes for the Board. Officers are elected at the first regular meeting of each year. The board duties include defining the strategic direction of the park, provide park and recreation opportunities to residents of the community and public, form rules of governance, accountable for the quality of the services and amenities provided, and maintain and follow an annual budget.

The purpose of the five-year Park and Recreation Master Plan is to review and assess park and recreation needs and improvements and establish priorities for the future to promote quality of life to the community. The planning effort is a means to obtain public input into the planning process of programming and developing park and recreation facilities and programs in order for the Petersburg Park Board, city leaders and staff to stay attuned to specific interests and broader sentiments of the citizens they serve.

Recreation is an integral part of a community's social, economic and natural resource environment. The Park Board believe that by providing quality parks and activities not just to city residents but to residents of the surrounding areas as well, the overall economic impact will be positive as those visiting will stay to visit business establishments in the city—restaurants, shops, etc.

Planning Area

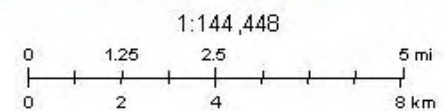
The Planning Area for the Petersburg Park & Recreation Board encompasses the city limits plus the surrounding rural communities/residents of the north central portion of Pike County, southeast corner of Knox County, and southwest corner of Daviess County.



4/18/2023, 10:43:23 AM

— City Boundary

— Planning Area




Source : Esri, Maxar, Earthstar Geographics, and the GIS User Community

Indiana DNR DHPA
2019 Indiana Dept. of Natural Resources, DHPA

Budget

The City of Petersburg views recreation opportunities for residents as an important aspect of quality of life. Below is the 2023 Park Department budget developed by the city.



[Report Search](#) / [Line-Item Budget Estimate Report](#)

Report Builder: Line-Item Budget Estimate Report

County: Pike Year: 2023

Unit Name: 63 - 3 - 0455 - PETERSBURG CIVIL CITY Fund: 1303 - PARK
View Report

1 of 1 Find | Next

Budgeted Spending 2023

Petersburg Civil City - Pike County, Indiana
2010 Population - 2,383

unit name	Fund	Department	Category	SubCategory	Line Item Code	Line Item	Published	Published Per Capita	Adopted	Adopted Per Capita
PETERSBURG CIVIL CITY	1303 - PARK	NO DEPARTMENT	PERSONAL SERVICES	Employee Benefits	204001120	SS/Med	\$1,000	\$0.42	\$1,000	\$0.42
	1303 - PARK	NO DEPARTMENT	PERSONAL SERVICES	Salaries and Wages	204001113	Board Salary	\$1,200	\$0.50	\$1,200	\$0.50
	1303 - PARK	NO DEPARTMENT	PERSONAL SERVICES	Salaries and Wages	204001111	Caretaker Salary	\$20,000	\$8.39	\$20,000	\$8.39
	PERSONAL SERVICES Total						\$22,200	\$9.32	\$22,200	\$9.32
	1303 - PARK	NO DEPARTMENT	SUPPLIES	Other Supplies	204001231	Other Supplies	\$5,000	\$2.10	\$5,000	\$2.10
	1303 - PARK	NO DEPARTMENT	SUPPLIES	Repair and Maintenance Supplies	204001220	Equip/Repairs	\$2,000	\$0.84	\$2,000	\$0.84
	1303 - PARK	NO DEPARTMENT	SUPPLIES	Operating Supplies	204001210	Gasoline/Diesel Fuel	\$1,200	\$0.50	\$1,200	\$0.50
	1303 - PARK	NO DEPARTMENT	SUPPLIES	Repair and Maintenance Supplies	204001221	Water Park Maint	\$1,000	\$0.42	\$1,000	\$0.42
	1303 - PARK	NO DEPARTMENT	SUPPLIES	Other Supplies	204001233	Lake Treatment	\$550	\$0.23	\$550	\$0.23
	SUPPLIES Total						\$9,750	\$4.09	\$9,750	\$4.09
	1303 - PARK	NO DEPARTMENT	SERVICES AND CHARGES	Other Services and Charges	204001501	Sales Tax	\$250	\$0.10	\$250	\$0.10
	1303 - PARK	NO DEPARTMENT	SERVICES AND CHARGES	Utility Services	204001330	Electric	\$3,000	\$1.26	\$3,000	\$1.26
	1303 - PARK	NO DEPARTMENT	SERVICES AND CHARGES	Insurance	204001320	Ins/Auto/Liab/Prop	\$1,000	\$0.42	\$1,000	\$0.42
	1303 - PARK	NO DEPARTMENT	SERVICES AND CHARGES	Utility Services	204001331	Natural Gas	\$700	\$0.29	\$700	\$0.29
	1303 - PARK	NO DEPARTMENT	SERVICES AND CHARGES	Repairs and Maintenance	204001340	Prop Repairs/Maint	\$2,000	\$0.84	\$2,000	\$0.84
	SERVICES AND CHARGES Total						\$6,950	\$2.92	\$6,950	\$2.92
	1303 - PARK	NO DEPARTMENT	CAPITAL OUTLAYS	Machinery, Equipment, and Vehicles	204001420	EQUIPMENT	\$1,100	\$0.46	\$1,100	\$0.46
	CAPITAL OUTLAYS Total						\$1,100	\$0.46	\$1,100	\$0.46
	NO DEPARTMENT Total						\$40,000	\$16.79	\$40,000	\$16.79
	TOTAL 1303 - PARK FUND						\$40,000	\$16.79	\$40,000	\$16.79

Goals and Objectives

The City of Petersburg Park & Recreation Board met to determine goals and objectives to carry out in the Park and Recreation Master Plan. These goals and objectives include:

- + Provide a framework to identify and provide a variety of recreational and leisure opportunities for all residents of Petersburg that are safe, accessible, and physically attractive.
- + Provide a high level of park and recreation services appropriate for Petersburg's current and planned socio-economic condition.
- + Capitalize on the community's existing built environment and natural/cultural resources.
- + Expand the level of public information, awareness and involvement in parks and recreation.
- + Preserve, protect, maintain, improve and enhance natural resources and recreational opportunities for City of Petersburg.
- + Develop facilities and programs that address emerging trends and residents preferences for recreational activities.
- + Develop cost effective approaches to developing new park and recreation offerings and utilize financial resources efficiently and equitably working with the adopted budget.
- + Identify park and recreation offerings that will help to attract new residents to the City and associated opportunities for the community to grow.
- + Identify park and recreation opportunities that can help to foster tourism and economic development pursuits.
- + Serve as a coordinating body to help coordinate local and regional activities associated with park and recreation facilities and programs.
- + Provide additional recreation activities and entertainment at the park.
- + Upgrade existing amenities and incorporate new.

Adoption of Master Plan

RESOLUTION ADOPTING 5-YEAR PARK AND RECREATION MASTER PLAN

WHEREAS, the City of Petersburg Park and Recreation Board is aware of the parks and recreation needs of the residents of Petersburg, Indiana, and

WHEREAS, the City of Petersburg Park and Recreation Board understands the continuing need to provide and maintain functional, safe, and aesthetic parks and park facilities, and

WHEREAS, the Board recognizes the importance of sound planning in order to meet the needs of its citizens;

NOW, THEREFORE, BE IT RESOLVED BY THE CITY OF PETERSBURG PARK AND RECREATION BOARD THAT:

1. The 2024-2029 Petersburg Park and Recreation Master Plan is hereby adopted as the official plan for growth and development of park and recreational opportunities for the effective period.

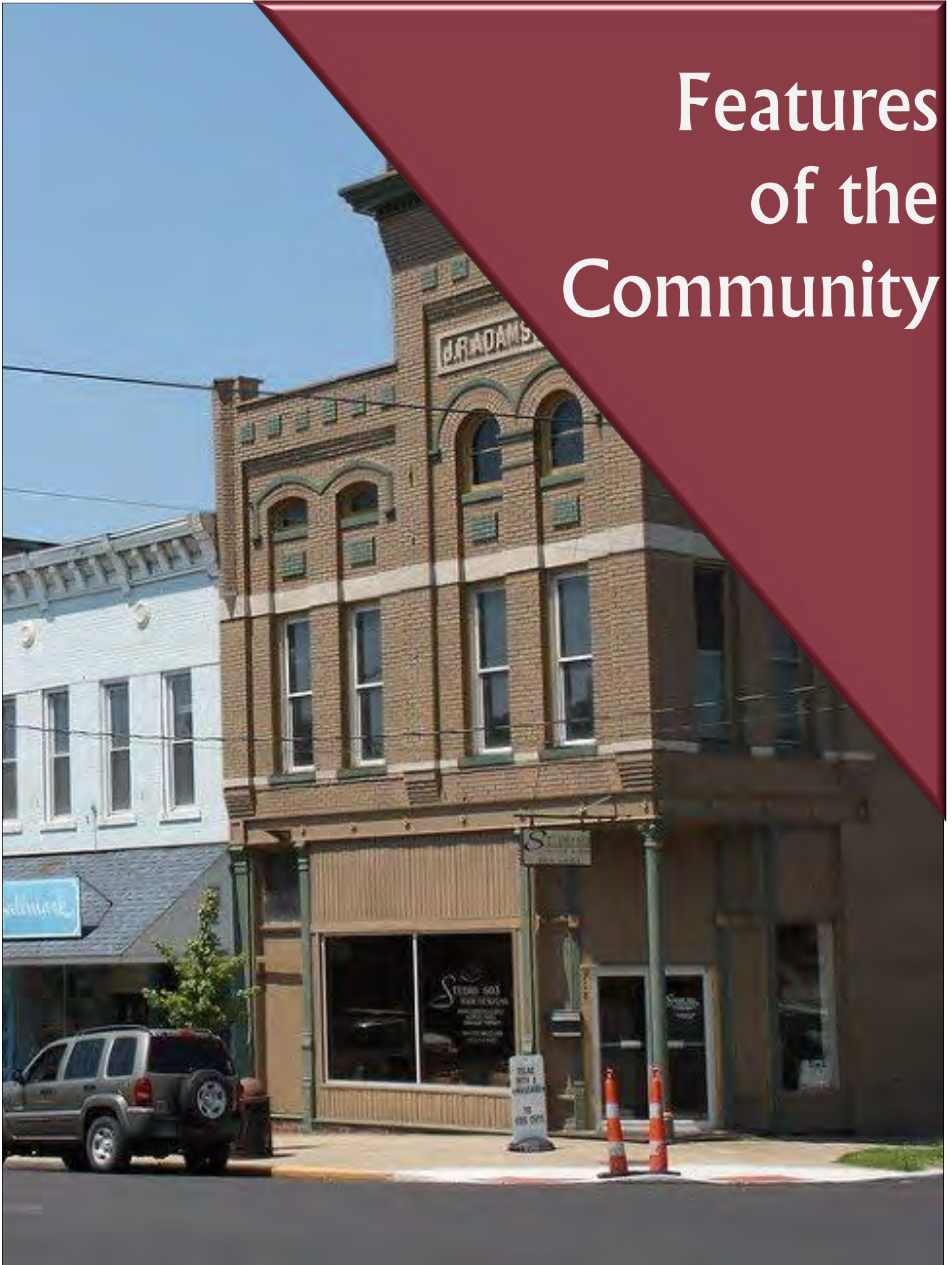
Adopted and signed this ____ day of _____, 2024.

President
Petersburg Park and Recreation Board

ATTEST:

Board Secretary

Features of the Community



History

The City of Petersburg is situated just south of the White River in the northcentral portion of Pike County. The City includes an area of 1.47 square miles (940.8 acres) of land and .004 square miles (2.56 acres) of water. It is approximately 50 miles northeast of Evansville, Indiana, 124 miles southwest of Indianapolis, Indiana, and 104 miles northwest of Louisville, Kentucky. Petersburg is the county seat of Pike County lying within Washington Township. The City was platted in 1817 being named for Peter Brenton, the primary donor of land for the town site.



Petersburg is located near the Buffalo Trace, a historic route used for travel before 1790. The historic Wabash and Erie Canal completed in 1852 runs from Lake Erie at Toledo, Ohio connecting to the Ohio River at Evansville, Indiana. Petersburg was once an important shipping center with the canal just north of the City. Factories were built in the city increasing the population with new residents. This increase came to a halt in 1853 when a cholera outbreak was said to be caused by the canal. The outbreak led to residents fleeing the city, leaving behind only twelve families. Soon after the canal was abandoned which resulted in the slow growth of Petersburg with only 480 residents in 1850 and 589 in 1855. In 1870 the railroad arrived in Petersburg at the peak of its growth. At the time the city established a flouring mill



and the city's first bank-Citizen's State Bank. By 1892 the city had a tile factory, brick yard, planning mills, and flour mill along Main Street. In 1907 Main Street was lined with drugstores, groceries, restaurants, a confectionery, jewelry store, hotels, and more.



The Pike County Courthouse is centrally located in Petersburg. The courthouse was originally constructed in 1818 as a log courthouse situated directly east of the city square one year after the county was formed. In 1838 a second two-room one-story brick courthouse was erected on the city square and was then replaced by a two-story brick courthouse in

1868. This courthouse featured county offices on the first floor with courtroom and small anterooms on the second floor. The neoclassical-inspired style courthouse that stands today was built in 1922. The courthouse property also contains historical sights. These include the Grand Army of the Republic memorial, Pike County Veterans Memorial, three metal street lights, a Revolutionary War Veterans Memorial dedicated in 1987 and a memorial to the victims of the June 2, 1990 tornado.



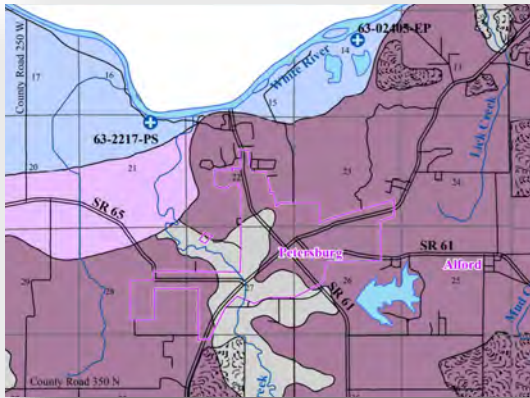
In August 1899, the last will and testament of Finis Hornady was to establish a park for the City of Petersburg. Mr. Hornady owned a 360 acre farm, donating



57 acres for a park in his namesake. The will requested that a three-member park board be established to manage and control Hornady Park, that no intoxicating liquors ever be sold or games of chance ever be allowed upon the premises. Mr. Hornady also left a trust fund that provides for the purpose of keeping Hornady Park in good order. Today, City officials annually allocate a portion of tax proceeds for the maintenance and upkeep of Hornady Park continuing to honor the will of Finis Hornady.

Hydrology of Petersburg

There are two aquifer systems present in the City of Petersburg and three systems to the north, south and west.



The aquifer system making up most of Petersburg is the Dissected Till and Residuum/Unglaciaded Southern Hills and Lowlands Aquifer System. This system consists of thin, eroded bedrock residuum and contains high amounts of clay. Since Petersburg is located in the northern portion of Pike County this area of the system includes pre-Wisconsin till, lacustrine silt and clay, and Wisconsin loess. This system has little potential for water production but is less susceptible to surface contamination due to the abundance of clay present.

Located in the west-central portion of Petersburg, the Alluvial, Lacustrine, and Backwater Deposits Aquifer System. This aquifer has thick deposits of soft silt and clay. This system is not known for high capacity wells in Pike County except for one 3-well facility producing significant amounts of groundwater withdrawal.

To the north of Petersburg is the White River and Tributaries Outwash Aquifer System. This system is mainly made up of large amounts of sand and gravel. This aquifer is currently the most productive aquifer system in the county with five registered groundwater withdrawal facilities.

The system to the west of the City is the White River and Tributaries Outwash Aquifer Subsystem and is made up of thinner sand and gravel deposits than the main system. No wells or registered facilities are associated with this aquifer.

The Coal Mice Spoil Aquifer System, formed during the surface-mining process, is just south of Petersburg. This system can contain substantial amounts of groundwater and ranges from clay, silt, and sand to gravel, slabs, and boulders.

Petersburg is within the White River Watershed. It starts downstream from where the East Fork White River joins the West Fork. Creeks running through the White River Watershed at Petersburg are Lick Creek and Prides Creek. This watershed flows to the south and southwest into the Ohio River and eventually to the Mississippi River and Gulf of Mexico. However, the southern two-thirds of Pike County is within the Patoka River Watershed.



Natural Features

Pike County has been mined for years for its abundance of coal. Heavy mining is present in the central and southern portions of the county with little mining in the northern portion. Petersburg in the north-central area of Pike County is surrounded by farmland.

Long term recreational opportunities and facilities depend on the soils they are developed on. If the soil is inadequate, long term recreation is not feasible. Soils present in Petersburg are very diverse. These soil types are Alford silt loam, Alvin fine sand loam, Alvin-Bloomfield complex, Ayrshire fine sandy loam, Beaucoup silty clay loam, Birds silt loam, Bloomfield loamy fine sand, Bonnie silt loam, Fairpoint-Bethesda complex, Hosmer silt loam, Iona silt loam, Muren silt loam, Pike silt loam, Princeton fine sandy loam, Reesville silt loam, Sylvan silt loam, and Wakeland silt loam. All soils in Petersburg range in slope with about a quarter susceptible to some or severe flooding and another quarter have some degree of erosion. They are a mix of well drained to poorly drained during seasonal rains. Man-made drainage systems have allowed for recreational opportunities such as picnic areas, parks, playgrounds, athletic fields, and paths/trails to be feasible on these soils.



Trees are important aspects of many parks. They can provide shade, a scenic trail, and simply be aesthetic in the fall when trees begin to change colors. While an area with existing trees might be ideal for a new park, a very dense grouping of trees may require a lot of work to clear. In 1923 citizens of Petersburg planted 200 trees in the park, many of which still stand today. Since then additional trees have been added to the park providing a variety of young and mature trees. Hornady Park boasts mature honey locust, black locust, catalpa, tulip, American sycamore, red maple, silver maple, sugar maple, sweet gum, pin oak, white oak, elm, blue spruce, Norway spruce and eastern white pine trees. There are also boxwood shrubs, ornamental grass and roses in the park.

Although the park has many mature trees, five responders to the survey stated more shade is needed especially around play and shelter areas. Survey responders also mentioned that some trees need dead areas trimmed.



Park Potential

The Petersburg Comprehensive Plan developed in 2019 identified several open spaces that have potential to be developed into parks. The recent public input survey responders also requested additional satellite parks around the city.

The first open space identified surrounds the elementary school and is controlled by the school corporation.



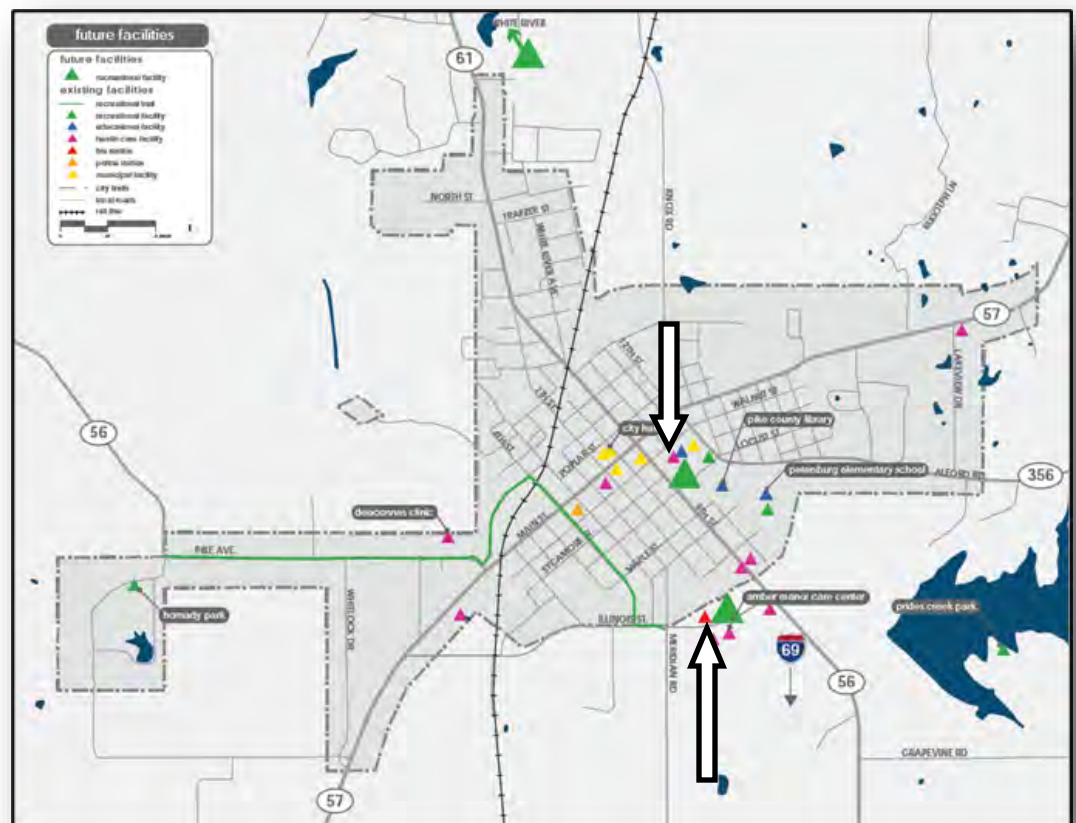
The city/park board could work with the school corporation and support efforts to expand recreational opportunities in this area and possibly connect to the school with a walking path. Please see the space to the left identified by the white arrow.

The second identified open space was in downtown Petersburg. Currently no centralized park space exists in downtown Petersburg that would serve its residents. Space behind the Pike County Public Library was identified as a possible gathering space with a gazebo or shelter

with picnic tables and/or benches for residents to use to relax and enjoy Petersburg. Please see the top arrow identified below.

The third open space identified is at Illinois Street and 6th Street. There is potential at this location for a mixture of landscaping, water features, lighting, play features or public art. Please see the bottom arrow identified below.

Survey responders also request additional play areas near dog area and shelters.

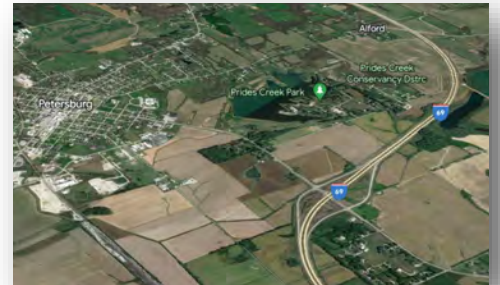


Man-made Features



Northeast of Petersburg, the AES Indiana Petersburg Generating Station (formerly IPL) is the dominate man-made feature in the Petersburg area. It is accessed off Indiana State Road 57. When AES Indiana was IPL, they announced closure of Unit 1 by 2021 and Unit 2 by 2023 and keeping Units 3 & 4 in operation. In December 2022, AES Indiana announced plans to convert the remaining two generation units from coal to natural gas by 2025. Once converted, AES Indiana will no longer be a coal burning facility for energy generation. With plans to keep the facility open, this will not have a strong economic impact on Petersburg.

The City of Petersburg does not appear to have changed measurably in recent years. However, one change to note is the construction of Interstate 69. Interstate 69 north of Indianapolis was completed in November 1971. The Indiana Department of Transportation opened the southern portion of Interstate 69 in phases in 2009, 2012, and 2015. This improvement has reduced traffic through Petersburg with little impact to businesses within the city. Interstate 69 has created significantly better connections to US Highway 41 on the southern edge of Evansville and State Road 144 interchange at Bargersville. As of December 2022, the segment from Bargersville to Interstate 465 has not been completed. Once complete Interstate 69 will run parallel to Interstate 465 around Indianapolis meeting the original highway running northeast. The Interstate 69 interchange locate south of Petersburg increases connectivity for new industrial development projects. There are also three state roads leading into Petersburg. These include State Road 56 connecting from the east, State Road 61 connecting from the west, and State Road 57 running north and south through the city.



There are several housing developments in Petersburg. The newest housing development is the Downtown Terrace. A smoke-free, affordable, 55 and older senior housing community with 42 one and two bedroom units. The facility features doctor offices, on site salon, retail space, and community areas. Tenants can easily access shopping, dining, and entertainment along Main Street. Three subsidized housing facilities are present in Petersburg– Liberty Apartments, Sycamore



Apartments and Brookfield Apartments. Liberty Apartments is a well maintained 32 unit low-income based facility with fenced playground area, onsite parking, and onsite laundry. Sycamore Apartments is a 62 and older senior housing facility with 20 bedroom units. Brookfield Apartments is a senior assisted living facility with 50 bedroom units.

Another housing company is Gilmour Homes. This Pike County based company acquires well-located homes to renovate for an affordable housing option available to the Petersburg community. The last housing development is Edgewoods Apartments duplex units.

Cultural Features

The City of Petersburg is made up of a diverse population. The City celebrates this diversity with many different cultural events throughout the year. Information of these events are listed below:

Family Food Truck Nights

Family Food Truck Nights is a three hour event featuring various food trucks the last Wednesday of each month from April to October. Different food trucks are featured each month. Members of the community can enjoy this event in the beautiful outdoor green space of Hornady Park with their friends, family, and even their pets.



Timeless Classics of Pike County



Timeless Classics of Pike County is an annual car show established in 1978. All makes of cars and trucks can be found during the show held at Hornady Park. Individual trophies are given away to participants. Community members can enjoy food, music and door prizes during the event.

Pike County Fair

The Pike County Fair has been a tradition in Pike County since 1921. The Fair is held the last week of July at Hornady Park. Members of the community and surrounding area can enjoy concessions, carnival rides, pageant, demolition derby, mud bogs, rodeo, and more.



Buffalo Trace Festival



The Buffalo Trace Festival is a two-day music festival held in October along Petersburg's Main Street. The festival was established in 2017. This event features a beer and wine garden, beauty pageant, vendor booths, carnival rides and games, parade, and local musician performances featuring a famous headliner each year.

Christmas Parade

The Christmas Parade is held the first Saturday in December. The community can enjoy ice skating, food trucks and parade along Main Street. Little ones can also visit Santa Claus in his Santa House.



Population and Culture

Pike County had a peak population in 1940 of 17,045 persons with Petersburg at 3,075 persons. In 1960 the county dropped to a population of 12,797 and has stayed relatively near this number over the years.

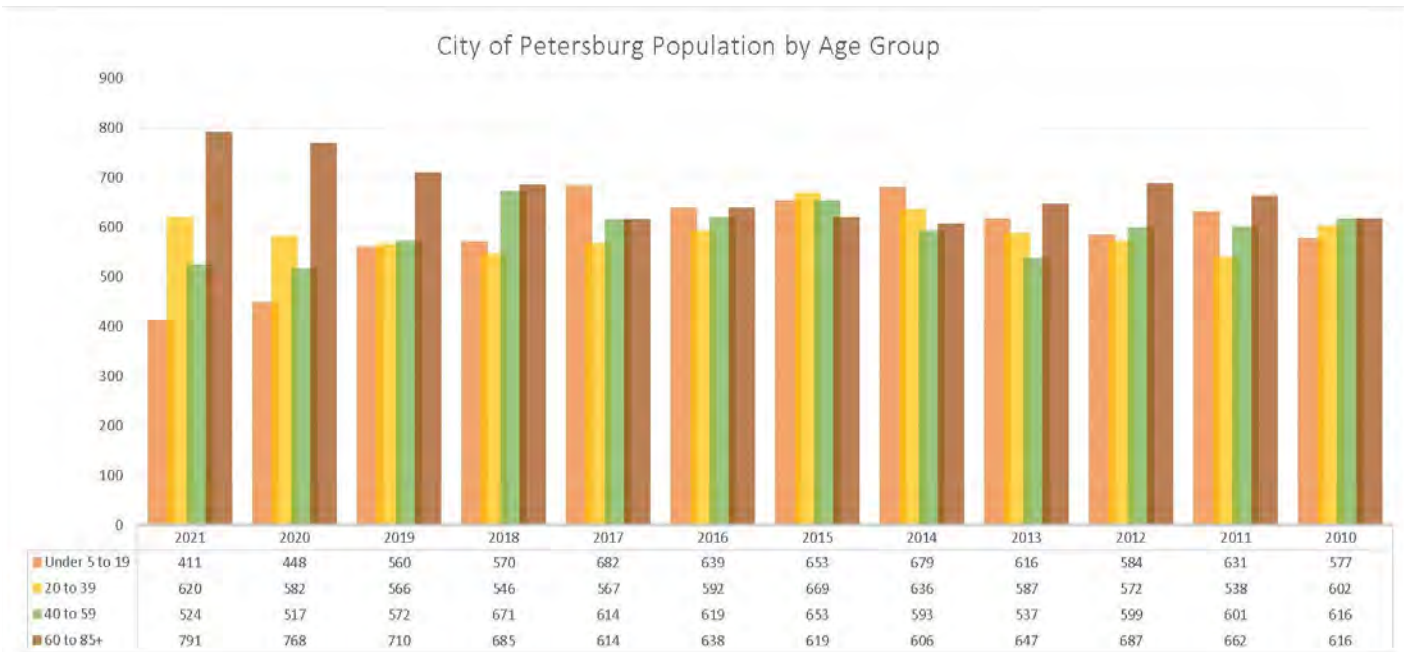
The City of Petersburg is the only incorporated community located in Washington Township, Pike County. Washington Township is the largest township in Pike County with a population of 4,314. Patoka Township is the second largest with a population of 2,826. Petersburg has seen an increase in population with a high of 2,592 in 2015. Since 2015, the population has started to decreased.

The Population History table demonstrates the population changes from 2010-2020. Petersburg is 1.474 square miles and has a population density of 1,591 persons per square mile.

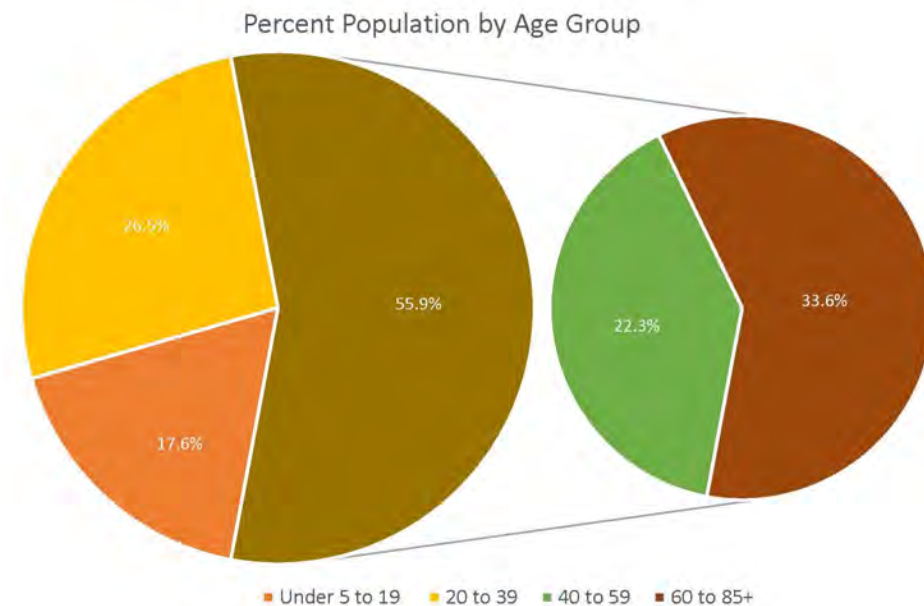
The Population by Race table depicts the City of Petersburg, as well as all of Pike County and Indiana. The City has a fairly diverse population with 93.5% White, 2.3% Two or More Races, 1.9% Hispanic or Latino, and a low population count of Black or African American, American Indian and Alaskan and Asian Races.

POPULATION HISTORY	City of Petersburg	Pike County	Indiana
2021	2,346	12,220	6,751,340
2020	2,315	12,364	6,696,893
2019	2,408	12,378	6,665,703
2018	2,472	12,411	6,637,426
2017	2,477	12,471	6,614,418
2016	2,488	12,554	6,589,578
2015	2,592	12,687	6,568,645
2014	2,513	12,733	6,542,411
2013	2,388	12,780	6,514,861
2012	2,445	12,849	6,485,530
2011	2,435	12,901	6,454,254
2010	2,406	12,955	6,417,398

POPULATION BY RACE	White	Black or African American	American Indian and Alaska	Asian	Hawaiian or Pacific Islander	Hispanic or Latino	Two or More Races
City of Petersburg	2194	20	8	4	0	45	54
Pike County	11,716	39	41	15	0	180	380
Indiana	5,241,795 (77.6%)	648,513 (9.6%)	26,086 (0.4%)	167,959 (2.5%)	3,137 (4.6%)	554,191 (8.2%)	436,726 (6.5%)



The population of Petersburg is distributed fairly evenly across age groups. The largest age group within the City of Petersburg is seniors aged 60 and over followed by young adults aged 20 to 39, adults aged 40 to 59 and lastly children under the age of 20.



Petersburg City Parks should accommodate people of all ages with facilities and activities for children, families, and seniors. The Median Age of residents in Petersburg is 48 years of age.

The bar graphs depict City of Petersburg population by age

group and percent population by age group.

The table depicts the median age of the City of Petersburg, Pike County and Indiana.

MEDIAN AGE		
City of Petersburg	Pike County	Indiana
48	44	38

Economic Factors

The City of Petersburg has maintained a relatively constant economic climate. With large employer AES Indiana Petersburg Generating Station, formerly Indiana Power & Light, the community enjoy considerable positive economic dynamics associated with this large manufacturing facility.

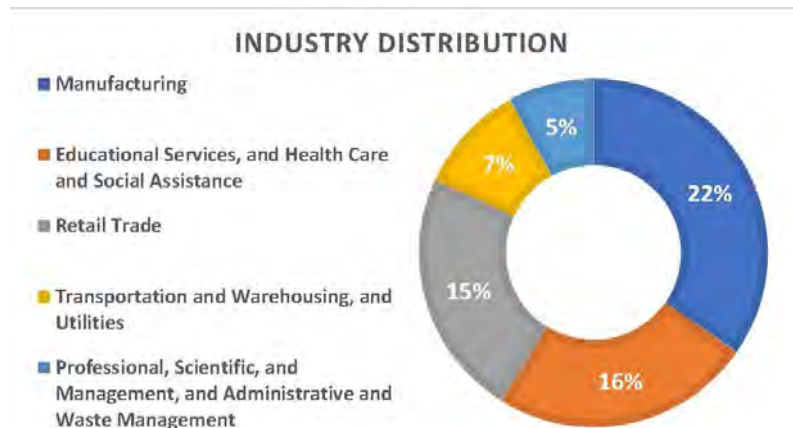
COMMUTING PATTERNS	Population Total	Percent Population Total
Working Population	1,039	
Live & Work in Petersburg	306	29.4%
Live in & Work Outside Petersburg	734	70.6%

However, the majority of Petersburg residents leave the community for employment. U.S. Census data notes that of 1,039 residents in Petersburg commute to work, 70.6% are

employed outside of Petersburg. This number may increase when AES converts units 1 & 2 to natural gas at the Petersburg Generating Station in 2025. The Commuting Patterns table shows Petersburg residential commuting patterns.

Employment within Petersburg is primarily within the Production, Transportation and Material Moving, Management, Business, Science and Arts, and Sales & Office fields. The Occupation graph shows the occupation distribution in the City of Petersburg.

Petersburg remains poised to accommodate future economic development opportunities with its proximity to the I-69 Interchange and location near the White River, coupled with Indiana Southern Railroad running through the City, the community is well positioned to attract new industry and investment.



The pie chart depicts the top five industries in Petersburg. These include Manufacturing, Educational Services, Health Care and Social Assistance, Retail Trade, Transportation and Warehousing, Utilities, Professional, Scientific, Management, Administrative and Waste Management.

The figures below and on the following page depict the employment statistics for the City of Petersburg, Pike County and Indiana from 2010 to 2020.

	City of Petersburg	Pike County	Indiana
2021	1,063	5,824	3,411,413
2020	1,069	5,867	3,379,544
2019	1,067	5,867	3,363,860
2018	1,114	5,978	3,345,383
2017	1,143	6,154	3,326,494
2016	1,167	6,153	3,314,108
2015	1,167	6,218	3,297,501
2014	1,097	6,113	3,285,205
2013	1,060	5,965	3,279,355
2012	1,033	5,979	3,288,210
2011	979	6,082	3,278,746
2010	932	5,993	3,274,429

Labor Force

Source: Census.gov

	City of Petersburg	Pike County	Indiana
2021	14	209	160,490
2020	3	182	159,865
2019	11	217	161,351
2018	15	252	180,969
2017	36	232	202,199
2016	51	240	228,929
2015	93	316	258,739
2014	149	366	290,469
2013	146	348	315,476
2012	178	402	309,363
2011	151	461	294,244
2010	124	442	274,859

Unemployed

Source: Census.gov

	City of Petersburg	Pike County	Indiana
2021	1,049	5,615	3,250,923
2020	1,066	5,685	3,219,679
2019	1,056	5,650	3,202,509
2018	1,099	5,726	3,164,414
2017	1,107	5,922	3,124,295
2016	1,116	5,913	3,085,179
2015	1,074	5,902	3,038,762
2014	948	5,747	2,994,736
2013	914	5,617	2,963,879
2012	855	5,577	2,978,847
2011	828	5,621	2,984,502
2010	808	5,551	2,999,570

Employed

Source: Census.gov

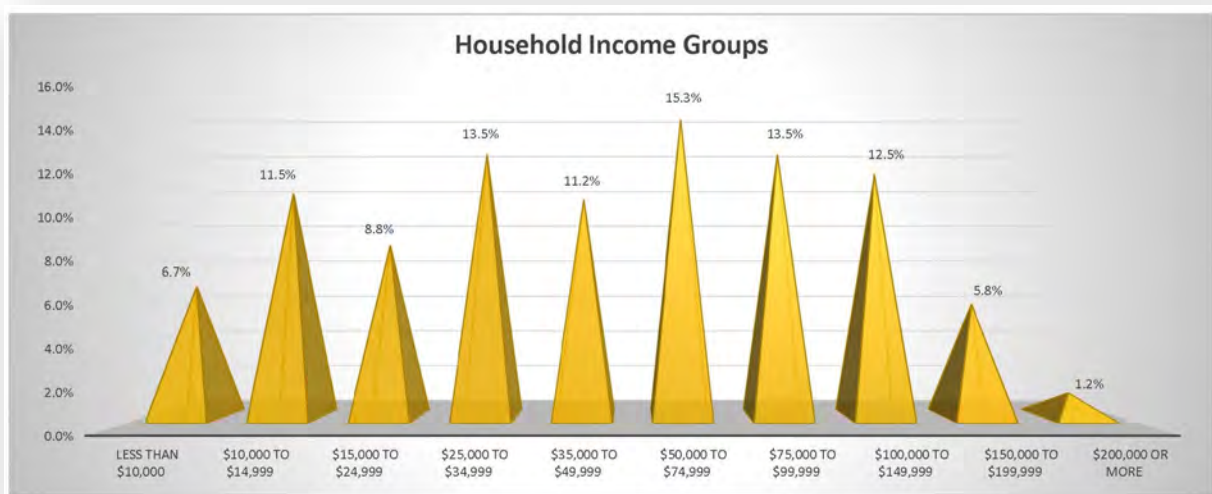
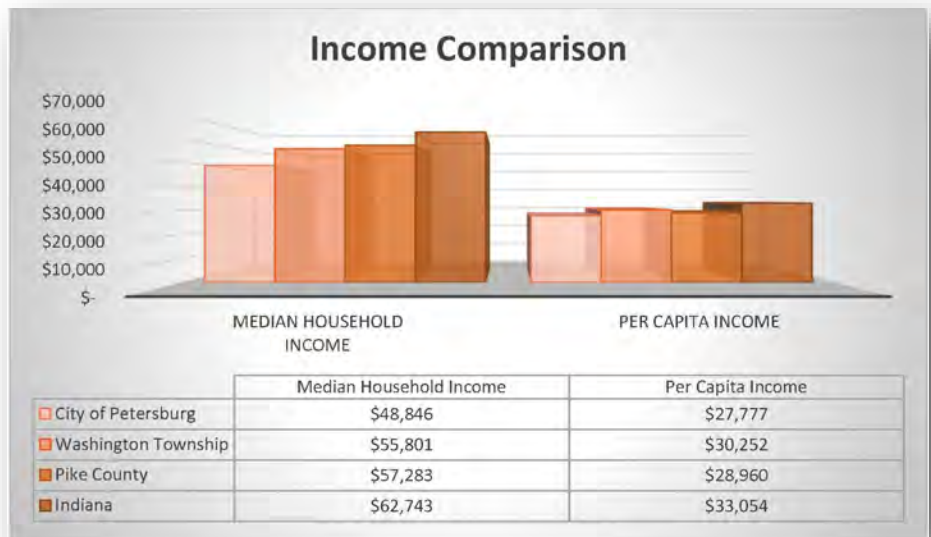
	City of Petersburg	Pike County	Indiana
2021	1.3%	3.6%	4.7%
2020	0.3%	3.1%	4.7%
2019	1.0%	3.7%	4.8%
2018	1.3%	4.2%	5.4%
2017	3.1%	3.8%	6.1%
2016	4.4%	3.9%	6.9%
2015	8.0%	5.1%	7.8%
2014	13.6%	6.0%	8.8%
2013	13.8%	5.8%	9.6%
2012	17.2%	6.7%	9.4%
2011	15.4%	7.6%	9.0%
2010	13.3%	7.4%	8.4%

Unemployment Rate

Source: Census.gov

Income

The median household income and per capita income of Petersburg are both lower than that of Washington Township, Pike County or Indiana. However, it is important to note the median household income increased by 45% since the 2010 Census for the City of Petersburg. The Income Comparison figure shows the Median Household Income and Per Capita Income of the City of Petersburg, Washington Township, Pike County and Indiana.

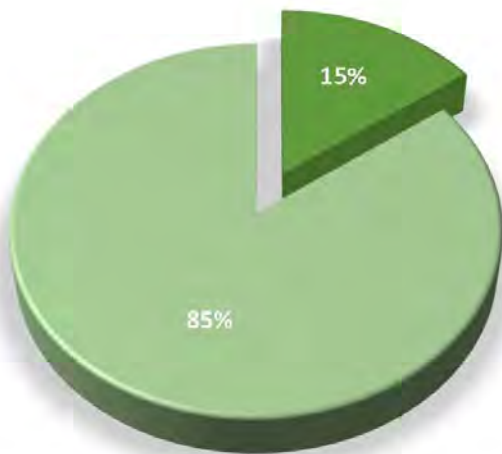


The Household Income Groups figure reveals that there are households with a variety of different income levels in Petersburg. The largest number of households are in the \$50,000 to \$74,000 per year range. The data shows 27% of households in Petersburg make less than \$25,000 per year. The household income of Petersburg is 14.6% lower than the household income of Pike County. These factors must be taken into consideration when discussing increases in usage or rental fees to ensure that the park and recreation facilities remain accessible to all residents.

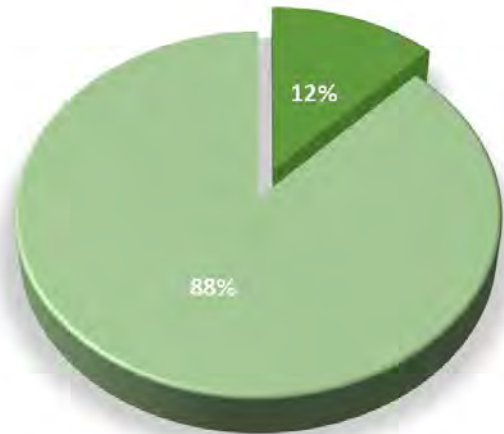
Poverty

The household income data from the figures below illustrate that the City of Petersburg has a higher percentage of residents below poverty level compared to Washington Township, Pike County, and Indiana.

City of Petersburg

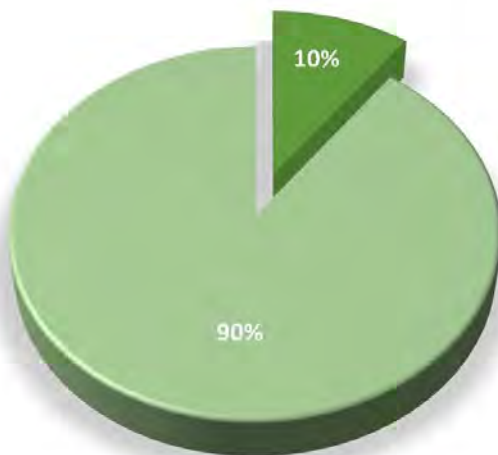


Washington Township

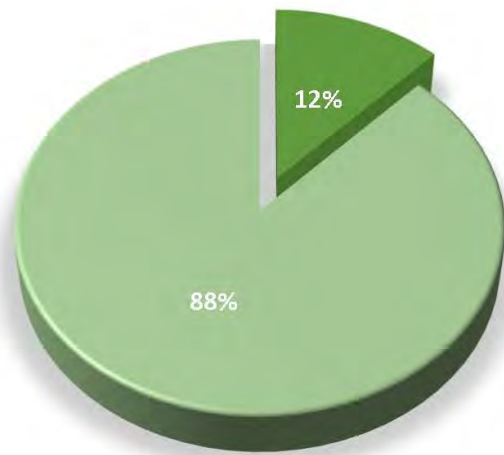


■ Below Poverty Level
■ Above Poverty Level

Pike County



Indiana





Existing Park Inventory

City of Petersburg

Hornady Park
1213 W Park Road
Petersburg, IN 47567

Hornady Park is the only park maintained by the Petersburg Park Board. The park is located on the west side of Petersburg on 59.46 acres. The park property was annexed into the city in 1975 by ordinance. The park has a lake for fishing and feeding ducks and geese, four shelter houses, playground equipment, songbird garden, butterfly garden, prairie plant garden, covered walking bridge, restroom facility, basketball goal, two horseshoe courts, nature trail,



caretaker house, 4-H building with meeting room and kitchen facilities. A log cabin belonging to the first residents of the town was moved to the park. A spray park was added by donation from the Keifer family.

The Hornady Park Trustees and the Pike County Fair and 4-H Board entered into a lease agreement on December 28, 1950 that allows the Pike County Fair to be held on 11 acres of the park. An addendum to the agreement was made in January 26, 1987 to add a building and facilities for conducting the fair.

Prides Creek Park
1045 E CR 400 N
Petersburg, IN 47567

Prides Creek Park was established in 1970, is owned by the Prides Creek Conservancy District and is located approximately one mile south of Petersburg (outside City limits) on SR 61 and SR 56. The Prides Creek Conservancy District built and constructed a 90 acre, multi-purpose (flood and recreation) reservoir. The Pike County Park and Recreation Board has a 45-year lease on the site from the Conservancy District to maintain the property. This 260 acre site contains a swimming beach, bath house, swimming dock with diving board, Frisbee golf, 60 campsites, 145 permanent campsites, paved roads, restrooms, showers, laundry facilities, playgrounds, 90-acre lake, fishing, boat ramp, tennis, basketball, volleyball, horseshoes, amphitheater and a Par 36/9 hole golf course.

Schools

Pike County School District

The City of Petersburg is located in the Pike County School District. There are four schools in the Pike County School District—Petersburg Elementary School, Winslow Elementary School, Pike Central Middle School and Pike Central High School. School grounds provide recreation opportunities. Many schools have significant lands available for recreation, most of which are publicly funded. Recreational facilities available at the schools include playgrounds, basketball courts, football fields, baseball/softball fields, tennis courts and track.

Federal

National Wildlife Refuge and Management Area
510½ West Morton, PO Box 217
Oakland City, IN 47660
812-749-3199

The US Fish and Wildlife Service is focusing attention on acquiring acreage in Pike and Gibson Counties as part of the National Wildlife Refuge System. The Patoka River National Wildlife Refuge and Management Area was established in 1994 as the second wildlife refuge in Indiana. The Patoka River contains a rich diversity of fish and wildlife species. The principal naturally-occurring habitat type is bottomland forested wetland, the most endangered of all our nation's wetlands. The refuge boundary contains 12,700 acres of wetlands.

The marbled salamander can be found secretively concealing itself under rocks and logs in the wetlands. The Halloween pennant dragonfly, known for its orange and black wings is also found in the wetlands during warm months. The refuge protects nesting areas for the endangered least tern. Giant cane is being restored at the Patoka River National Wildlife Refuge and Management Area. Swamp rabbit and a host of insects rely on giant cane for all aspects of their lives. The Refuge has acquired over 300 acres of grasslands that provide nesting habitat for many bird species.

State

Sugar Ridge Fish & Wildlife Area
2310 E State Road 364
Winslow, IN 47598
812-789-2724

The Sugar Ridge Fish & Wildlife Area is made up of six separate sections totaling 8,100 acres. The area has 145 acres of abandoned strip mine fishing for bluegill, redear, channel catfish and largemouth bass. There is also shoreline fishing at some of the pits. The area also has deer, squirrel and wild turkey hunting. There is a public shooting range for shotgun, rifle and archery users and a dog training area. No camping or swimming is allowed. The area is maintained by the Indiana Department of Natural Resources-Division of Fish and Wildlife, 402 W Washington Street, Room W273, Indianapolis, IN 46204, 317-232-4091.

Pike State Forest
5994 E State Road 364
Winslow, IN 47598

The Pike State Forest is maintained and managed by the Indiana Department of Natural Resources, Division of Forestry. This 4,444 acre property in southwestern Indiana began land acquisition in the 1930s. Most of the buildings were constructed by Works Progress Administration (WPA) using material cut from local timber stands. Topography varies from hilly uplands to low bottomlands of the Patoka River. Recreation opportunities include: hunting, horseback riding, picnicking, bird watching and hiking.

Local

Jefferson Township Community Center, Inc.
2301 N Spring Street
Otwell, IN 47564

This center is located in Otwell one block north of SR 356. This site is 9.54 acres and has a community center with kitchen and dining/meeting facilities. The Otwell seniors meet at this center to provide senior activities and meals. An indoor gymnasium, track, one softball/baseball field and one basketball court is at the site.

Winslow Little League Park
411 East Porter Street
Winslow, IN 47589

This facility is operated and maintained by the Winslow Park & Recreation Board. The park is located along SR61 in Winslow on 29.46 acres. Facilities include three baseball fields, tennis and basketball courts, shelter house, playground equipment, concession stand/restrooms, racing track, garden spots and batting cage with pitching machine.

Jordan Memorial Park and Spurgeon Park
11415 S SR 61
Spurgeon, IN 47584

The Spurgeon Park and Recreation Board is responsible for the operation of Jordan Memorial Park located on the north side of Spurgeon along SR61. The park has an enclosed shelter house with a kitchen, an outdoor shelter and picnic area, playground and horseshoe pit.

The Spurgeon Park and Recreation Board is also responsible for the operation and management of Spurgeon Park which consists of one softball/baseball diamond, one combination basketball/tennis court. This park is located along SR 61 in the center of Spurgeon.

Old State Road 64 Public Park

The Pike County Commissioners own 74 acres of undeveloped land that was donated as a public park in 1984. The site was previously mined and is located along old SR 64 in Lockhart Township. There are limits to the development potential because there are no utilities in this area.

Lockhart Township Community Center

The Lockhart Township Community Center is located in Stendal. The Board is made up of volunteers that live in Stendal. The facility was part of the Stendal school system until the county merged it into the county-wide school system. The gym was given to the community of Stendal.

Velpen Park
E Oak Street & S 3rd Street
Velpen, IN

The Pike County Commissioners own .34 acres of land that was donated as a public park. The site has playground equipment and two basketball courts.

Private-Local

Petersburg Little League, Inc.
Illinois Street
Petersburg, IN 47567

This facility is owned by the American Legion of Petersburg and operated by the Petersburg Little League, Inc. The park area contains 25.15 acres and has five fields for baseball and softball with concession stands. The organization operates youth league softball and baseball for children from age 6-15 years.

Private-County

Buffalo Trace Scout Camp
5735 E CR 175 N
Winslow, IN 47598

This facility was made possible by a donation of 264 acres in Pike County from Old Ben Coal Company to the Buffalo Trace Scout Council. There is a Challenge Outdoor Personal Encounter (COPE) course at the site for corporations and businesses to learn cooperation skills. A waterfront area, hiking trails, shooting and archery ranges, chapel, meeting room, dining center, six cabins, campfire area, trading post, scouting skills area and shower facilities are available for rent to scout and non-scout groups.

Miller's Field
Winslow, IN 47598

This field is operated and owned by the American Legion Post of Winslow. The park has fishing in the Patoka River, a boat ramp, shelter house, baseball diamond and sand volleyball court.

Evansville

**Temple Hills Camp
Methodist Temple Church
Evansville, IN 47714**

The camp is owned and operated by the Methodist Temple Church of Evansville, and is located on SR 425 E, about two miles west of Stendal, Indiana. The facility is located on 120 acres and includes a rustic retreat lodge with two large dorm rooms that hold 50 people, six shower and bathroom facilities, a large fully-equipped kitchen, sofa seating area, air conditioning, two fireplaces, large screened in porch and recreation equipment (ping-pong, horseshoes, etc.). It also has a three acre stocked lake, swimming, camping area, shower house, electric and water hook-ups, volleyball, basketball, softball, hiking picnic area and outdoor worship center by the lake. This facility can be rented by contacting the church.

Accessibility



ADA Coordinator

The 1990 Americans with Disabilities Act requires that local governments with over 50 employees designate at least one individual to act as ADA compliance coordinator for the entire government unit. Kyle Mills has been designated as the ADA Coordinator by the City of Petersburg. Persons with concerns pertaining to park and recreation accommodations should contact Mr. Mills.

Kyle Mills, Title VI & ADA Coordinator
City of Petersburg Code Enforcement Department
704 E. Main Street, Petersburg, IN 47567
812-354-3396
kmills@petersburg.in.gov

The City maintains a listing of accessible park amenities and programs at City Hall. The listing, as well as a copy of all ADA policies and procedures is available upon request either in person or by contacting the ADA Coordinator listed above.


Assurance of Compliance

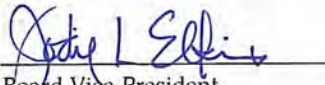
**ASSURANCE OF ACCESSIBILITY COMPLIANCE WITH:
ARCHITECTURAL BARRIERS ACT OF 1968 (As Amended);
SECTION 504 OF THE REHABILITATION ACT OF 1973 (As Amended);
AND TITLE II OF THE AMERICANS WITH DISABILITIES ACT OF 1990
(As Amended)**

The City of Petersburg Parks and Recreation Board has read the guidelines for compliance with the Architectural Barriers Act of 1968 (as amended); Section 504 of the Rehabilitation Act of 1973 (As Amended); and Title II of the Americans with Disabilities Act of 1990 (as amended) and will comply with the applicable requirements of these Acts.

Passed and signed this 6 day of November, 2023.

ATTEST:


Board President


Board Vice-President

Self Evaluation

The City of Petersburg has conducted an inventory and self-evaluation of Hornady Park to determine improvements needed within the city park facilities. The city has indicated a commitment of continued self-evaluation and that ADA standards/guidelines are intended to apply to all construction undertaken within the City.

Below is a list of the self-evaluation findings.

Shelter 1

- Add handicap parking
- Add handicap accessible entrance
- Add handicap seating

Shelter 2

- Add handicap accessible entrance
- Add handicap seating

Shelter 3

- Add handicap parking
- Add handicap seating

Shelter 4

- Add handicap parking
- Add handicap seating

Playground

- Add handicap parking
- Add handicap access
- Add handicap activities
- Add ADA compliant surfaces around play equipment

Lake Ashley Dock

- Add handicap parking
- Add handicap entrance

Restrooms

- Add handicap parking
- Add handicap accessible entrance door
- Add hand rail to stalls
- Add handicap accessible stall door handle
- Add handicap accessibility to hand washing basin

The timeline and future improvement efforts takes this list into account.

ADA Complaint/Grievance Procedure

Location/Availability of Complaint Forms

A copy of the City of Petersburg Complaint Form may be obtained by contacting the Title VI Coordinator. Although using the Complaint Form is recommended when filing a complaint, it is not required.

What to Include When Filing a Complaint

Complaints must contain the following and describe as much as possible the facts and circumstances surrounding the alleged discrimination:

- Name of the complainant
- Contact information (address, telephone number, e-mail address)
- Basis for the allegation(s) (i.e. race, color, age, etc.)
- A detailed description of the alleged discrimination (who, how, when, where & why they believe they were discriminated against including the location(s), name(s) and contact information of all witnesses, if applicable)
- Any other information that is deemed significant

The Title VI Coordinator will notify the complainant in writing if the complaint is incomplete and allot 15 calendar days for the complainant to respond and provide the information needed to complete the complaint.

Complaint Investigation Procedures

A complaint is considered complete when all necessary information is provided in writing and is signed. Within thirty (30) calendar days after receipt of a completed complaint, the Title VI Coordinator will arrange to speak or meet with the complainant to discuss the complaint and the possible resolutions if applicable.

If the City of Petersburg does not have sufficient jurisdiction to investigate the complaint, the Title VI Coordinator will refer the complaint to the appropriate local, state or federal agency holding such jurisdiction. In such cases, the Title VI Coordinator will notify the complainant in writing that the complaint is outside the City's jurisdiction and where the complaint has been referred for further handling.

The Title VI Coordinator will then conduct a complete and thorough investigation of complaints inside the City of Petersburg's jurisdiction, and based upon the information obtained, will render a final written response letter to the complainant or the complainant's representative by registered mail or hand delivery within sixty (60) calendar days. The final written response will include a description of the complaint, a summary of the investigation and the findings of such, summaries of all individuals interviewed, and if appropriate, recommendations and resolutions. All written complaints, investigations and responses will be retained for at least three (3) years in the city's annual report.

If a complainant is dissatisfied with the final resolution of the complaint, he or she has the right to contact the Department of Justice, Civil Rights Division, at (888) 736-5551.

ADA Complaint/Grievance Form

TITLE VI COMPLAINT FORM City of Petersburg, Indiana

Complainant's Name: _____ Date: _____

Address: _____

City, State, & Zip Code: _____

Phone Number: _____ Email Address: _____

Person discriminated against: (if someone other than the complainant)

Name: _____ Phone Number: _____

Address: _____

City, State, & Zip Code: _____

Please indicate why you believe the discrimination occurred:

____ Race ____ Color ____ Age
____ Sex ____ Sexual orientation ____ Gender identity
____ Disability ____ National origin ____ Religion
____ Income status ____ Limited English proficiency ____ Other (Please explain below)

What was the date of the alleged discrimination?: _____

Where did the alleged discrimination take place?: _____

Please describe the alleged discrimination. Be as specific as possible in explaining what happened and whom you believe was responsible. *(Attach additional pages if needed)*

Please list any and all witnesses' names, phone numbers and email addresses:

What type of remedy would you suggest?

Have you ever filed a complaint with any other federal, state or local agency; or with any federal or state court? ____Yes ____No

If yes, which court or agency? _____

Please attach any documents or other information that you believe is relevant to your complaint. Please sign, date and send your complaint to:

Kyle Mills / Title VI & ADA Coordinator
City of Petersburg Code Enforcement Department
704 E. Main Street
Petersburg, IN 47567

Printed name: _____

Signature: _____ Date: _____

Accessibility Resources

Additional resources concerning improving accessibility for disabled persons are available at the resources listed below:

2010 ADA Standards for Accessible Design — (Including Play Areas):

www.ada.gov/2010ADASTandards_index.htm

For technical assistance on applying the Americans with Disabilities Act of 1990:

Great Lakes ADA Center

University of Illinois—Chicago

Institute on Disability and Human Development

1640 W Roosevelt Road, Room 405

Chicago, IL 60608

800.949.4232 (voice/TTY)

312.413.1407 (voice/TTY)

312.413.1856 (Fax)

www.adagreatlakes.org

US Department of Justice

800.514.0301 (voice)

800.514.0383 (TTY)

www.ada.gov

www.adachecklist.org

Provides free and fee-based technical accessibility assistance:

National Center on Accessibility

501 North Morton Street, Suite 109

Bloomington, IN 47404-3732

812.856.4422

812.856.4421 (TTY)

812.856.4480 (Fax)

nca@indiana.edu

ncaonline.org

ADA Design Standards Checklist

International Play Equipment Manufacturer Association (IPEMA)

Ipema.wpengine.com/wp-content/uploads/2017/05/ADA-Checklist-Reference.pdf

For ADA trainings, webinars, and more:

Governor's Council for People with Disabilities

www.in.gov/gpcpd/2331.htm

For technical assistance on federal ADA Accessibility Guidelines:

United States Access Board

1331 F Street, NW, Suite 1000

Washington, DC 20004-1111

800.872.2253 (Voice, toll-free)

800.993.2822 (TTY, toll-free)

ta@access-board.gov

www.access-board.gov/

Lending library of resources on many aspects of accessibility:

Indiana Institute on Disability and Community Center Library

Indiana University—Bloomington

2810 E Discovery Parkway

Bloomington, IN 47408-9801

800.437.7924 (toll-free)

812.855.9396 (fax)

libiidx@indiana.edu

www.iidc.indiana.edu/?pageId=34

Resource for answers concerning persons with developmental disabilities:

The Arc of Indiana

143 E Market Street, Suite 200

Indianapolis, IN 46204

800.382.9100 (toll-free)

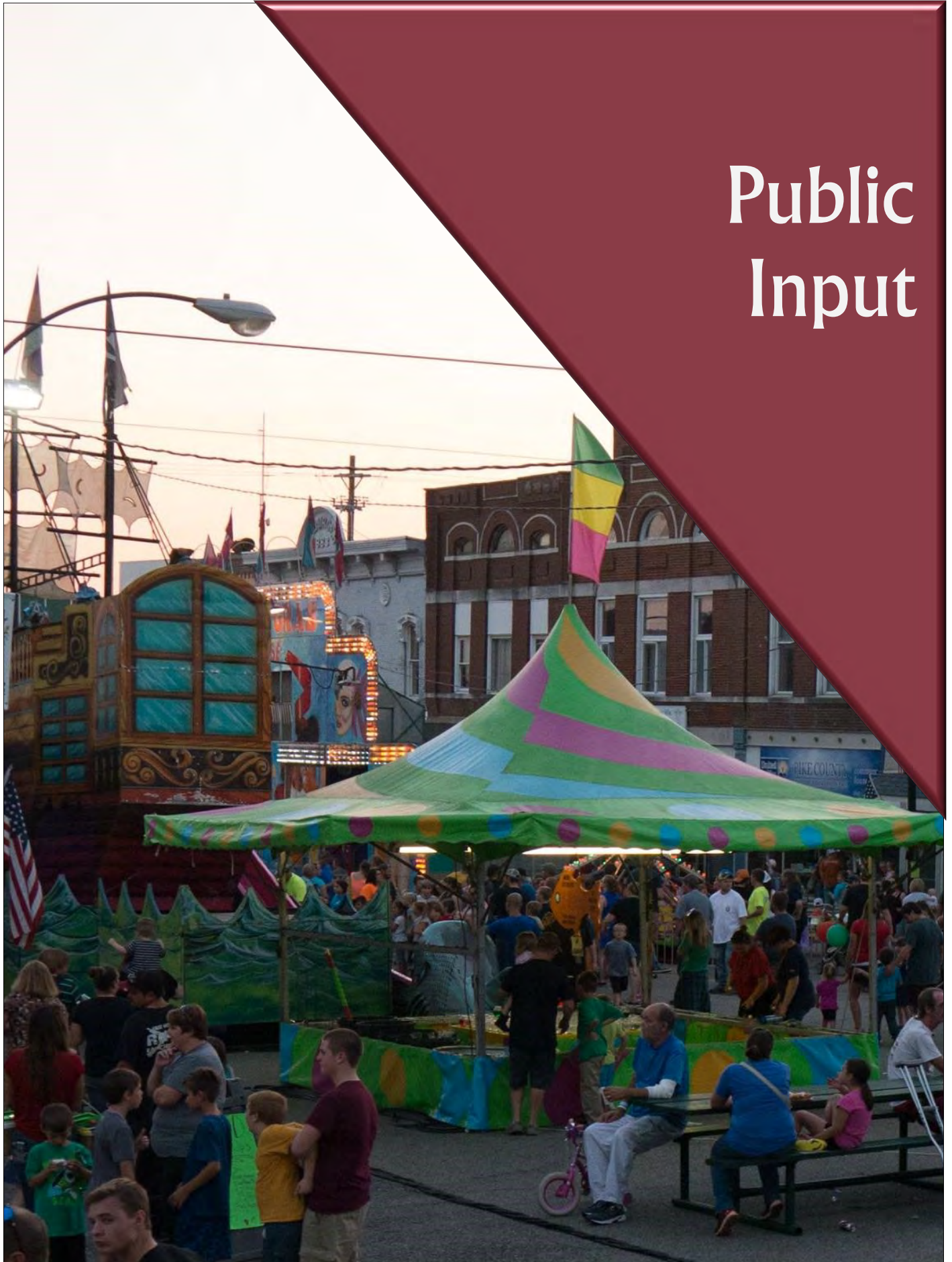
317.977.2385 (fax)

www.arcind.org/

The Self-Advocates of Indiana

www.arcind.org/supports-services/links-to-resources/

Public Input



Survey Overview

Public input was sought on the direction of growth for parks and recreation in Petersburg. An online survey was developed using SurveyMonkey. In addition to the online survey, paper surveys were distributed to complete and to Petersburg Town Hall for residents to complete during the annual Buffalo Trace Festival. Indiana 15 Regional Planning Commission also aided in the outreach by sending survey link invitations to all area businesses in and near Petersburg to further reach members of the community. The sign to the right was posted around Petersburg, and throughout Hornady Park (see the dock photo below) and on Facebook.

The local Press Dispatch newspaper published a press article stressing the importance of a park plan and provided a link to the SurveyMonkey online survey. A request was also emailed to all high school students that utilize the park to complete the survey. Paper and online surveys went live on August 7, 2023 and closed on October 18, 2023. After the launch of the survey almost 60% of responses were collected in late August and proceeded with a steady response to the close of the survey. In total 91 survey responses were collected—2 paper surveys collected at City Hall and 89 responses collected online.



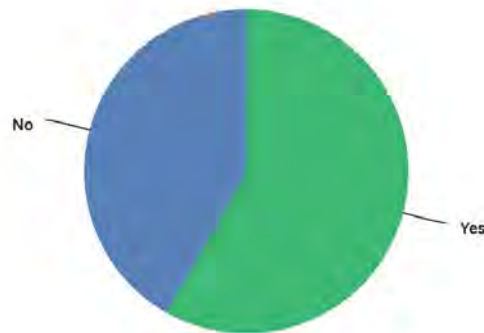
Results from the survey show that 58% of the responders live in Petersburg and most of these visit the park daily. Their favorite activities are the trails, playground, splash pad, shelters and ducks. Most park participants are interested in improved and additional restrooms, a safer walking/jogging/biking path, more playground equipment, and the addition of a pool. Organized activities suggested are concerts, exercise programs, movies, crafts/antiques, family events and sports. The survey also showed that awareness of the park could be better served with a website which was the preferred method to be notified of activities at the park followed by email then text. It also showed that weekends, evenings and afternoons are the preferable times for visiting the park.

Full results can be found on the following pages. A copy of the survey and in depth comments are located in the Appendix.

Survey Results

Q1 Do you live in the City of Petersburg?

Answered: 91 Skipped: 0



ANSWER CHOICES

Yes

No

TOTAL

RESPONSES

58.24%

41.76%

53

38

91

Q2 How many members of your household fall into each age range? List the total number of members per age range.

Answered: 91 Skipped: 0

ANSWER CHOICES

0-5

6-12

13-17

18-21

22-25

26-39

40-59

60-74

75+

RESPONSES

32.97%

42.88%

38.46%

32.97%

19.78%

43.96%

60.44%

28.57%

8.79%

30

39

35

30

18

40

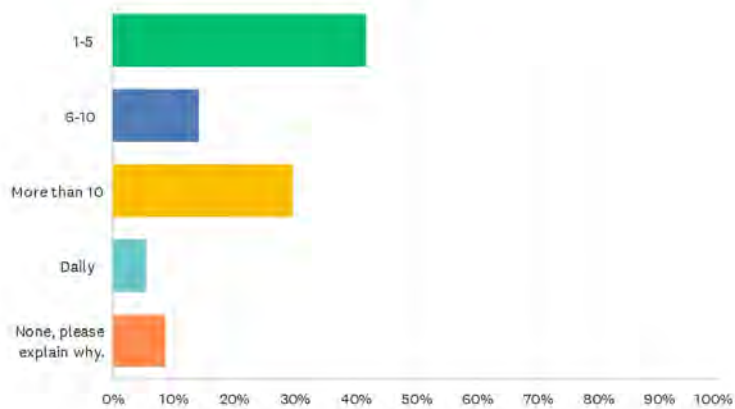
55

26

8

Q3 How many times a month did members of your household visit Petersburg parks during the summer?

Answered: 91 Skipped: 0



ANSWER CHOICES	RESPONSES	
1-5	41.76%	38
6-10	14.29%	13
More than 10	29.67%	27
Daily	5.49%	5
None, please explain why.	8.79%	8
TOTAL		91

Q4 What is your favorite activity at the park and why?

Answered: 85 Skipped: 6

Comment	Total Comments
walking/jogging/running/biking	34
playground	26
splash pad	20
relaxing/picnics/shelter house	8
ducks	4
pickleball	4
fair	4
fishing	3
tennis	1
Christmas in the park	1
camping	1
disc golf	1

Q5 Are there any barriers that keep you from participating in recreational programs or activities sponsored by Petersburg parks?

Answered: 91 Skipped: 0



ANSWER CHOICES	RESPONSES	
Yes	21.98%	20
No	78.02%	71
TOTAL		91

Q6 What improvements would you like to see at Petersburg parks? What are the most important?

Answered: 69 Skipped: 22

Comment	Total Comments
nicer restrooms	11
more/safe biking/walking paths (separate from vehicle traffic)	10
more playground equipment - older kids	9
pickleball courts	8
more playground equipment - toddlers	6
public pool	6
more activities - music, artists, classes	5
shade	3
path to the playground (strollers)	2
update the trail in the woods	2
teens	2
update splash park	2
refreshments/water station	2
more benches	2
more campsites	2
pavilion/shelter	2
repair covered bridge	1
more ducks	1
better lighting	1
sidewalk to Prides Creek	1
bike parking	1
closer parking	1
community garden	1
event center	1
updated signage	1
add sports leagues	1
handicap playground	1

Q7 What additional recreational activities or facilities would you like to see added to current park operations?

Answered: 61 Skipped: 30

Comment	Total Comments
pool	13
pickleball	12
walking path (separate from road)	9
sports leagues	5
skate park	4
new/update restrooms	3
tennis court	3
playground for older kids (concrete ping pong, rock climbing wall)	3
more fitness equipment/activities	2
additional satellite parks around town	2
family events	2
event center	2
bathroom by playground	1
shady dog park	1
trails to connect playground with shelters	1
play equipment at shelters	1
sidewalk to Prides Creek	1
splash pad expansion	1
amphitheater	1
boat rental	1
toddler area	1
label trees - nature trail	1
kayaking	1
disc golf	1
concessions	1
kids water toys	1

Q8 What programs/family events would you like to see added to Petersburg parks?

Answered: 40 Skipped: 51

Comment	Total Comments
concerts	14
exercise/health	6
movies	6
crafts/antiques	5
family events	5
tournaments	4
holiday events	3
food trucks	3
bar-b-ques	3
worship	2
PRIDE	1
biking activities	1
talent show	1
training	1
community garden	1
pool	1
natural things	1
event center	1

Q9 Where and what types of trails would you like to see developed in Petersburg parks?

Answered: 55 Skipped: 36

Comment	Total Comments
walk/run	14
bike	12
hiking	11
nature	9
sidewalk to Prides Creek	4
fitness trail signs missing	2
dog friendly	1

Q10 How would members of your household prefer to receive information about Petersburg parks?

Answered: 79 Skipped: 12



ANSWER CHOICES	RESPONSES	
Text	24.05%	19
E-mail	25.32%	20
Website	37.97%	30
Other (please specify)	12.66%	10
TOTAL		79

Q11 How would you rate the general maintenance and upkeep of Petersburg parks?

Answered: 91 Skipped: 0

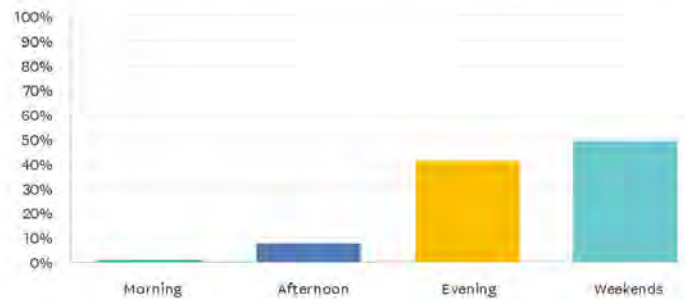
4.0★
average rating



	UNSATISFIED	(NO LABEL)	NEUTRAL	(NO LABEL)	SATISFIED	TOTAL	WEIGHTED AVERAGE
☆	1.10%	5.49%	17.58%	39.56%	36.26%	91	4.04
	1	5	16	36	33		

Q12 What are the most convenient program times for you and others in your household?

Answered: 87 Skipped: 4



ANSWER CHOICES	RESPONSES	
Morning	1.15%	1
Afternoon	8.05%	7
Evening	41.38%	36
Weekends	49.43%	43
TOTAL		87

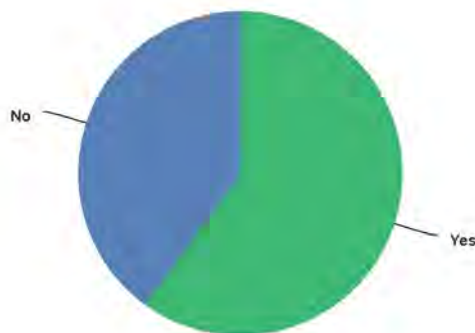
Q13 What can be done that would help you to participate in outdoor activities more often?

Answered: 30 Skipped: 61

Comment	Total Comments
more activities (whole family)	5
pickleball	2
pool	2
more awareness (website)	2
greenway loop around town	1
disability friendly activities	1
improve basketball	1
ADA sidewalks	1
better hours	1
better parking	1
more water	1
more shade	1

Q14 Do you have interest in satellite parks throughout town?

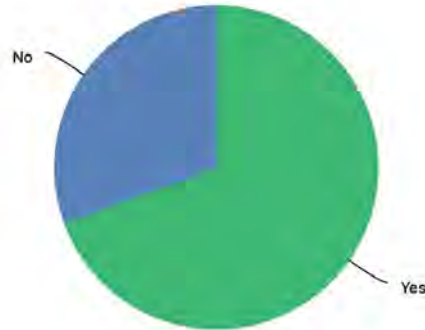
Answered: 80 Skipped: 11



ANSWER CHOICES	RESPONSES	
Yes	60.00%	48
No	40.00%	32
TOTAL		80

Q15 Do you have interest in fitness stations/parks?

Answered: 85 Skipped: 0



ANSWER CHOICES	RESPONSES	
Yes	69.41%	59
No	30.59%	26
TOTAL		85

Q16 Is there anything else you would like us to know?

Answered: 37 Skipped: 54

Comment	Total Comments
needs to be utilized more (activities)	3
better upkeep	2
satellite parks	2
adult fitness area/classes	1
playground near dog park	1
pickleball	1
expand Hornady Park	1
small venue for live events	1
indoor playground	1
skate park	1
rehabilitate tennis/basketball courts	1

Press Articles

The Press-Dispatch

WEDNESDAY, APRIL 12, 2023



VOLUME 153, NUMBER 14



New Hornady Park playground under construction

Last Wednesday local officials celebrated a new playground now under construction in Hornady Park. "This is an exciting day," said Petersburg Mayor R. C. Klipsch about the new playground. Klipsch said as a young boy he played on the playground equipment in the more than 100-year-old park. He credited Pike County Economic Development Executive Director Ashley Willis with securing the grant from the Welborn Baptist Foundation of \$136,000. Andrea Hays of Welborn Baptist said the beautiful park was a natural fit with their health initiative to help kids be more active in the beautiful setting. Klipsch said construction is expected to be completed by the end of April. Above are (l to r): Andrea Hays (Welborn Baptist), Matt Robinette (Petersburg Park Board), Mayor R. C. Klipsch, Ashley Willis (Pike EDC), Lisa Gelhausen (Indiana Region 15) and Tammy Selby (Petersburg Clerk Treasurer).

Commissioners hear 2023-2024 budget proposals

By Sherri Griffin
Editor
sherri@pressdispatch.net

Pike County Commissioners met on Monday, June 19 and spent the majority of the meeting listening to Pike County Economic Development Corporation, Pike County Soil and Water Conservation District, and Pike County Chamber of Commerce voice their wishes for the 2024 budget.

Ashley Willis, Executive Director for Pike County Economic Development Corporation (Pike County EDC) was the first to voice her proposal for the 2024 budget. Willis spoke about the value Pike EDC brings to the county through a variety of projects and grants. Some of those include the Invenenergy Cross-track Project which brought in \$110,000,000 in 2023, the Meadows Housing project which brought in \$1,100,000 in 2023, and the Hornady Park Playground equipment which was a \$230,000 grant for playground equipment replacement for 2-5 year olds, and 6-12 year olds, along with swings at Hornady Park, just being a few of the many projects EDC continuously works on. Willis requested a \$20,000 increase in budget for 2024 and President Mark Flint stated that he could vouch for what Willis is doing for the county. Willis stated that the EDC brings more assessed value to the county and that there is also a new solar project coming to Pike County.

Next was the Pike County Soil and Water Conservation District (SWCD)

with their 2024 budget proposal. For every dollar invested by the local government, Pike County SWCD leverages \$36.22 in response for land-owners throughout the county. The SWCD multiplies the county commissioners and council's investment through utilizing grants with Federal, State, and private dollars brought in to improve soil conservation and water quality.

Amity Traylor, District Administrator gave a presentation on the Pike County SWCD to the Commissioners and asked for \$27,475 for the 2024 budget to cover the technician salary, supplies, and per diem for compensation for the board.

The Pike County Chamber of Commerce was the final group heard during Monday's meeting about the 2024 proposed budget requests and the Chamber asked to increase their budget from \$1500 yearly to \$3,000 yearly. With the Chamber continually growing with responsibility, the part-time Director, Jill Hyneman is also being considered for a proposed Pike County Tourism Bureau position. The Chamber requested \$35,000 for the 2024 Pike County Tourism Bureau. These two position would intertwine on numerous levels. The Chamber's primary focus is the growth and promotion of business, while the Tourism Bureau's primary focus would be bringing visitors to the county. Treasurer for the Chamber, Robin Smith, stated to the Commissioners that the Chamber is ready to increase tourism in the county and develop a strategic plan to achieve those goals.

Commissioners listened to the three presentations and stated that they would take them under advisement at budget time.

In other business, the forgiveness and release of obligation to repay a grant for Spurgeon was approved in regards to the sewer system loan from 2010.

Josh Byrd, Superintendent of Pike County Highway, stated that the first round of paying is done and covered approximately nine miles. The department is now back to regular maintenance.

Judith Gumbel, Pike County Auditor, told Commissioners that the budget process will be different this year, with workshops with each department being heard on August 8, and September 10 will be the first budget hearing.

Commissioner Ryan Coleman brought up the fact that the shooting range at Sugar Ridge is the only shooting range South of Bloomington and it needs to be promoted. Pike County Sheriff Jason McKinney stated that 90 percent of the people who use Sugar Ridge are out of town or out of state people.

A second meeting will be held for Commissioners for the month of July. The first meeting will be Monday, July 10 at 8:30 a.m. and a second meeting will be held, that was approved at Monday's meeting, on Monday, July 24 at 8:30 a.m. All meetings are held at the Pike County Courthouse and the public is encouraged to attend.

Press Dispatch
Thursday, June 22, 2023

The Press-Dispatch

PRESS DISPATCH THURSDAY, AUGUST 17, 2023

Five year plan the works for Parks & Rec

By Lowell Thomas
Correspondent
news@pressdispatch.net

Most citizens of Pike County have used Hornady Park for a picnic or attended the county fair at least once, but most elder citizens have used the park's playground equipment and can remember the excitement of sliding down the tall slide and may have even been a wee bit afraid. Back in the day, kids might even have burnt their backsides on the metal surface but still yet, they had fun. That was nearly 75 years ago. How many times had that old slide been reconitioned?

There is now a new set of playground equipment which will now be claimed by the new generation of kids and grandkids as their park; this is only right. To the elders who had their park, it looks strange but to today's kids, they see a new park. This is perfectly normal because it is natural to do mortal combat with change. Sometimes change is refreshing and pretty and just needs to be embraced.

In today's time, there are people who are able to give aid in the form of finances and they are usually known as grants. There are too many types of monetary help to try and mention many of them. They usually want those seeking funds to have some skin in the game or to pay some. Ashley Willis worked hard

to get monetary help for the new playground equipment that has been erected in Hornady Park. With her effort, the new equipment was purchased and erected without cost to the City of Petersburg. The city did have to foot the cost of preparing the ground and leveling the surface. Willis was able to get the city a Read Grant and the Welborn Foundation furnished the remainder of the money.

Mayor R.C. Klipsch said the Park Board was to be responsible for the city park and recreation and entertainment. The stage in the park can possibly be used, as well as the cabin porch, because both of these offer great acoustics for musical entertainment. To do some of the things the public would like to see done, requires some financial help.

Region 15 Planning Commission is the grant writer for Petersburg and they do need a "five year comprehensive plan" in place to work towards. Mayor Klipsch stated that the first step will be a survey to cultivate ideas from the public so they can develop their five year plan. So the five year plan is to be a photograph of what the citizens of Pike County are asking for. The best thing the Pike County citizens can possibly do, is to fill out the survey and put trust in the people working for us.

An electronic survey is available to residents and other users



Amelia Chestnut and Beowulf Steele playing in the water at Hornady Park Water park. One of many things the park offers for their generation to enjoy at Hornady Park.

of the park at <https://www.surveymonkey.com/r/petersburg-parkplan>, or find the signs placed at locations within the parks with the QR code link. If you prefer, paper copies of the survey are available at City Hall and the library. Answers to the survey will remain anonymous and provide valuable input for consideration.

The updated plan will be used as a guide for the City of Petersburg

to improve upon current recreational opportunities and provide insight and ideas for future needs.

The survey will be available through October 15, 2023. If you have any questions about this survey, please contact Petersburg City Hall at 812-354-8511 or Cheri Taylor at Indiana 15 Regional Planning Commission at 812-367-8455.

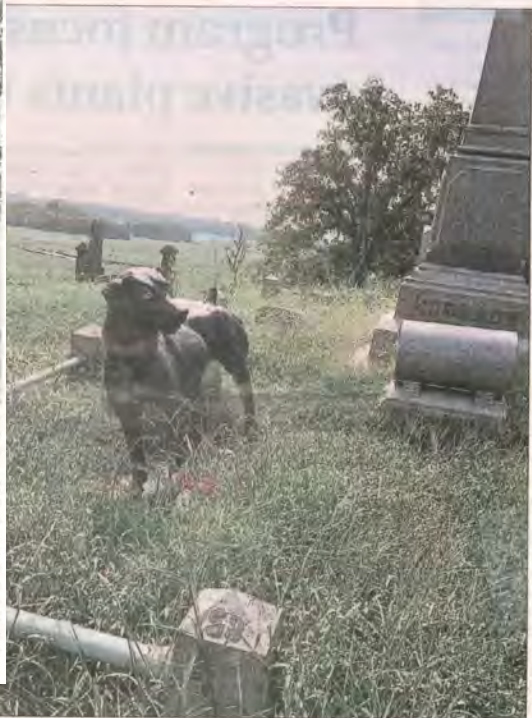


photo by LOWELL THOMAS

The large dog statue still stands guard over the Hornady family at Walnut Hills Cemetery. The large family monument stands tall for the Hornady Family among some of the older monuments in the cemetery.

*HORNADY PARK

One of best around Finis Hornady.

BY LOWELL THOMAS
NEWS@PRESSDISPATCH.NET

PETERSBURG

There has been news about a Five Year Plan so more grants can be sought for Hornady park. The park has required lots of volunteer hours over the years. The park can't be brought up in conversation concerning just how Petersburg happened to acquire such a beautiful piece of property without hearing the name of

Finis Hornady. This story has been told many times and each time the family name of Hornady is heard loudly as one of the wealthiest and generous families living in Pike County. A preacher from Ohio moved to Pike County in the early 1800's and preached at Regular Baptist church while he and his wife raised their six children. David and Hannah Hornady raised their children to be kind and to be a Christian family.

Finis was the youngest of the six children but became the head of the family

SEE PARK/PAGE A2

PARK

FROM PAGE A1

after his father passed away in 1839 and one of his elder brothers died in 1849, and the other passing in 1852. Finis and his three sisters continued living on the family farm. The four of them chose a family burial plot in Walnut Hills Cemetery where today there is a structure around their grave site with a statue of a huge dog standing guard.

Out of the six children, only one married and that was one of the elder brothers so this family never got to experience becoming a larger family, because the remaining four made a pact to never marry

or lose their part of the wealth left by the departed family members. They lived on the farm until they passed. The youngest sister and Finis continued living on the family farm until Finis died on September 22, 1899. The youngest sister continued living at the family home until her demise and she died at the age of 91.

In his will, Finis gave approximately 57 acres of land to the City of Petersburg with many stipulations one of which Finis charged the city was to form trustees to oversee the requirements of his will. The property was overran with Blackberry vines and many hours of clearing the property was needed. This property is now known as Hornady Park, as required in his will.

Finis Hornady also gave money to the Hornady Baptist Church, the Pike County Masonic Lodge, and to the Odd Fellows who maintained Walnut Hills cemetery.

Their father's dedication to the Lord and his teaching of generosity to his fellow mankind, has left Petersburg with a very beautiful park.

Many additions and improvements have been made over the years. The Scout cabin was built in so the Boy Scouts and the Girl Scouts would have a meeting place, and in 1952, the 4-H building was built on the grounds where the Hornady family home stood.

It is obvious that the City of Petersburg has been the benefactor of the kindness and considerate nature of the Hornady Family.

Public Hearing

Sign-in Sheet

Public Hearing minutes



Needs Analysis

Needs Analysis

The survey results show the top five important improvements to Hornady Park from responders were:

- Nicer restrooms
- Safer biking/walking paths separate from the road
- More playground equipment
- Pool
- Organized activities

Added activities to Hornady Park requested by responders include:

- Pool
- Pickleball
- Walking path separate from the current road
- Sports leagues
- Skate park
- Update restrooms

The Park Board members evaluated Hornady Park and the activities available to residents and determined the following needs:

- Additional recreational activities
- Add “Entertainment in the Park”
- Additional playground equipment
- New shelter house
- New picnic tables
- Concession stand

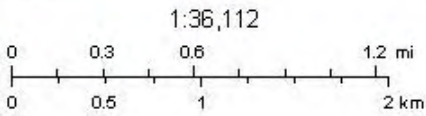
Maps



City of Petersburg



4/18/2023, 10:58:37 AM



Esri, HERE, Garmin, © OpenStreetMap contributors, and the GIS user community
Source: Esri, Maxar, Earthstar Geographics, and the GIS User Community

Indiana DNR DHPA
2019 Indiana Dept of Natural Resources, DHPA

Existing Facilities

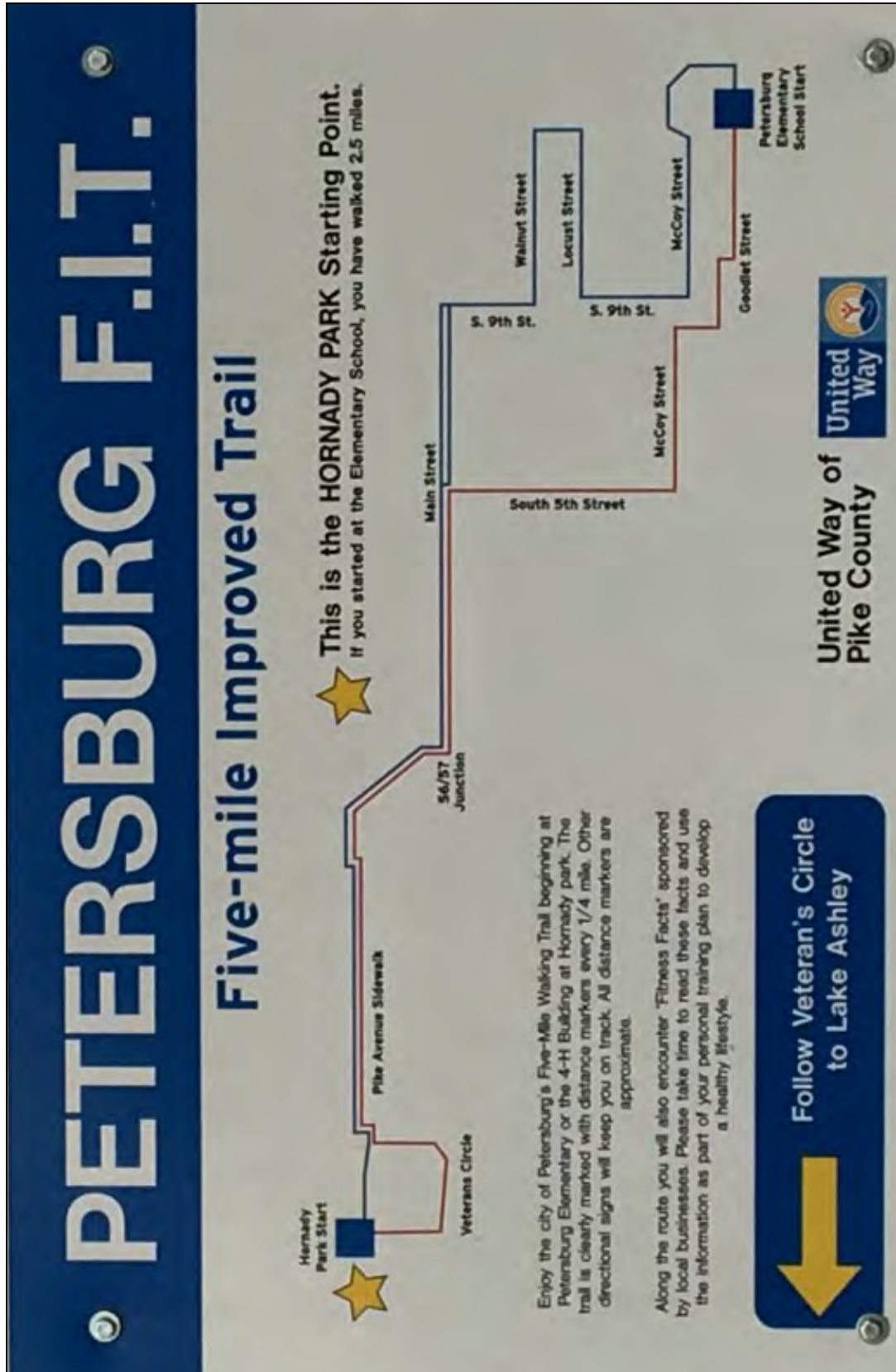


— Existing Facilities

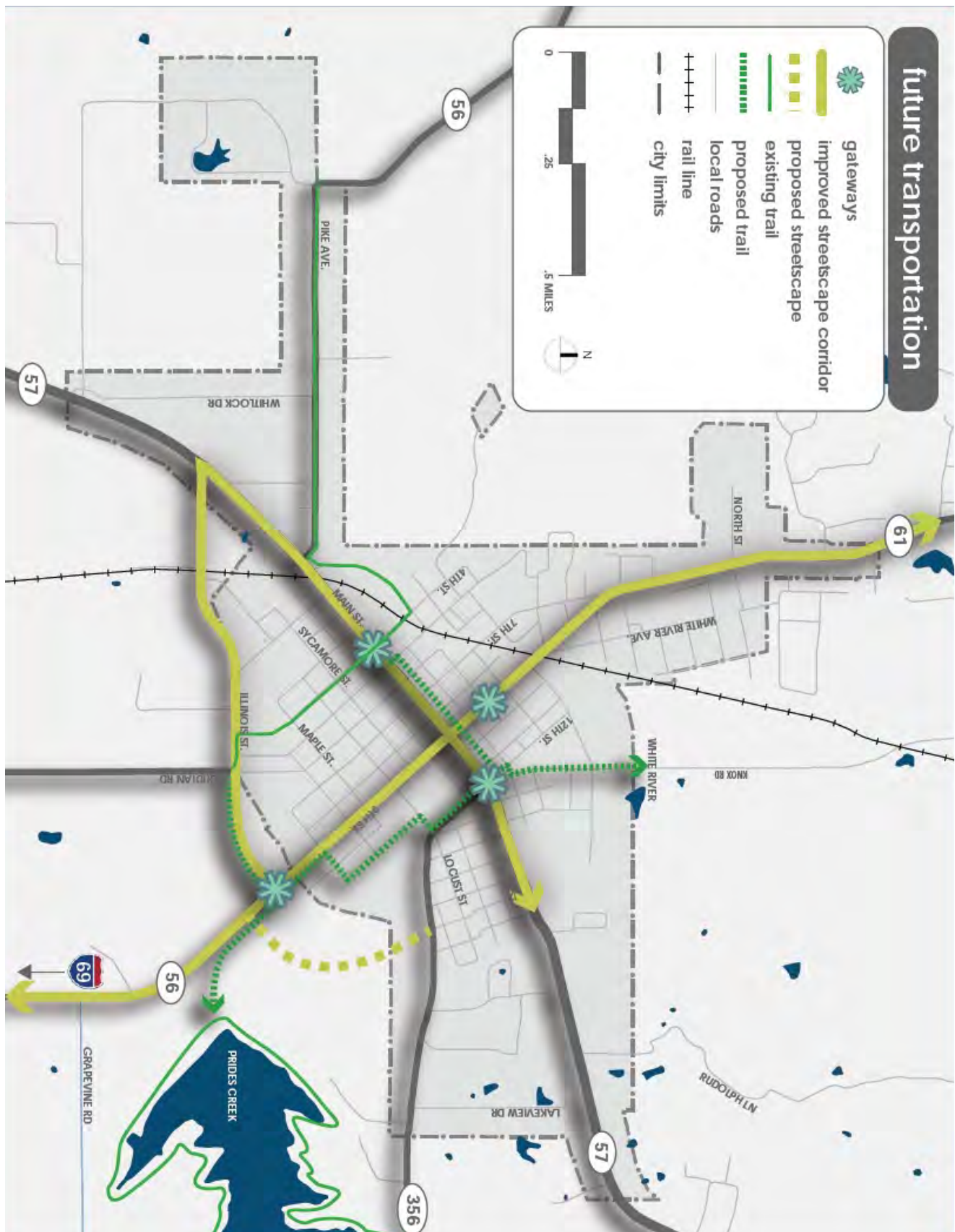
Hornady Park



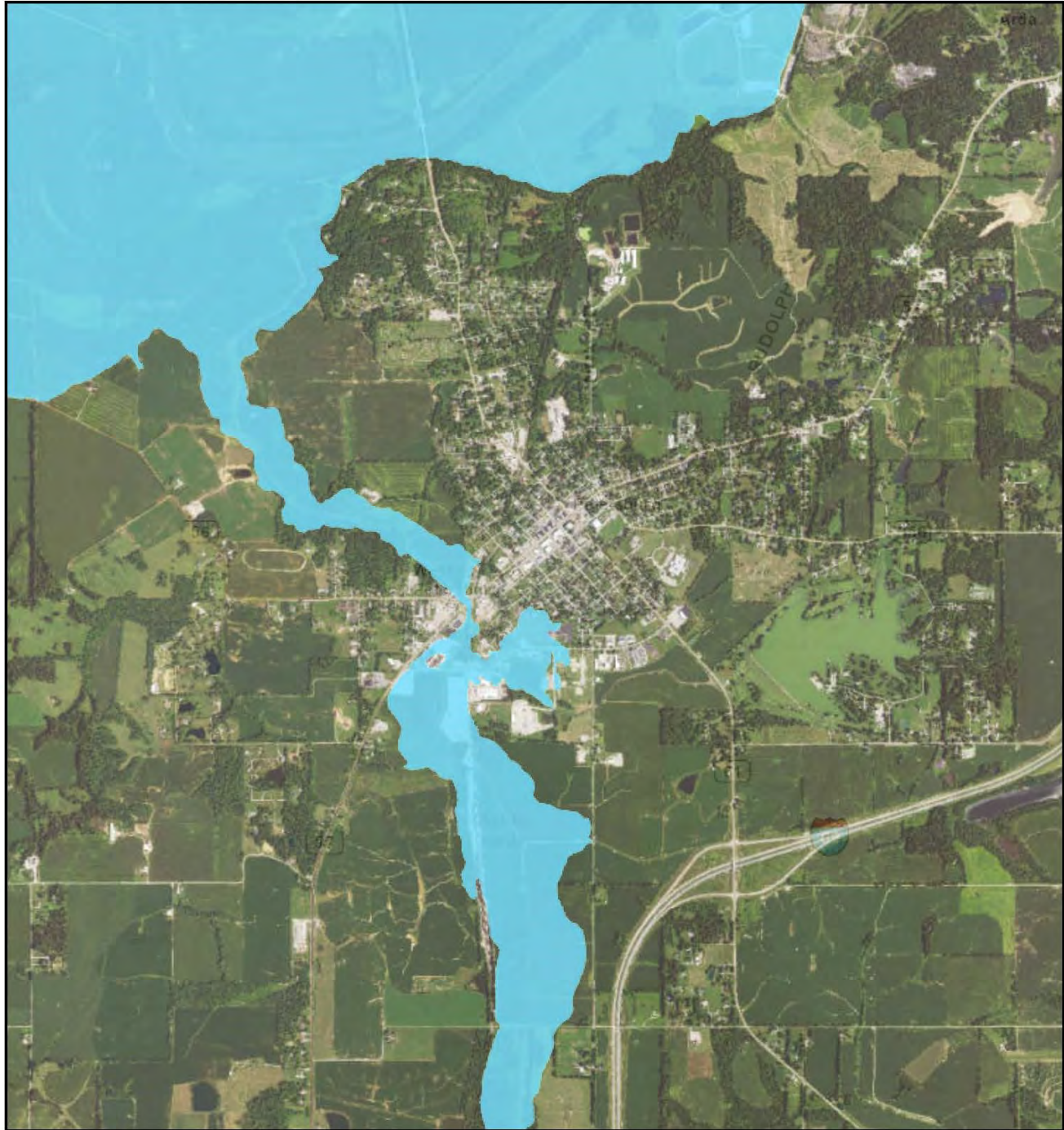
Trails



Existing & Potential Connectivity



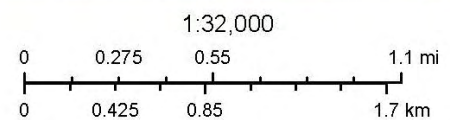
Petersburg Floodplain



April 11, 2023

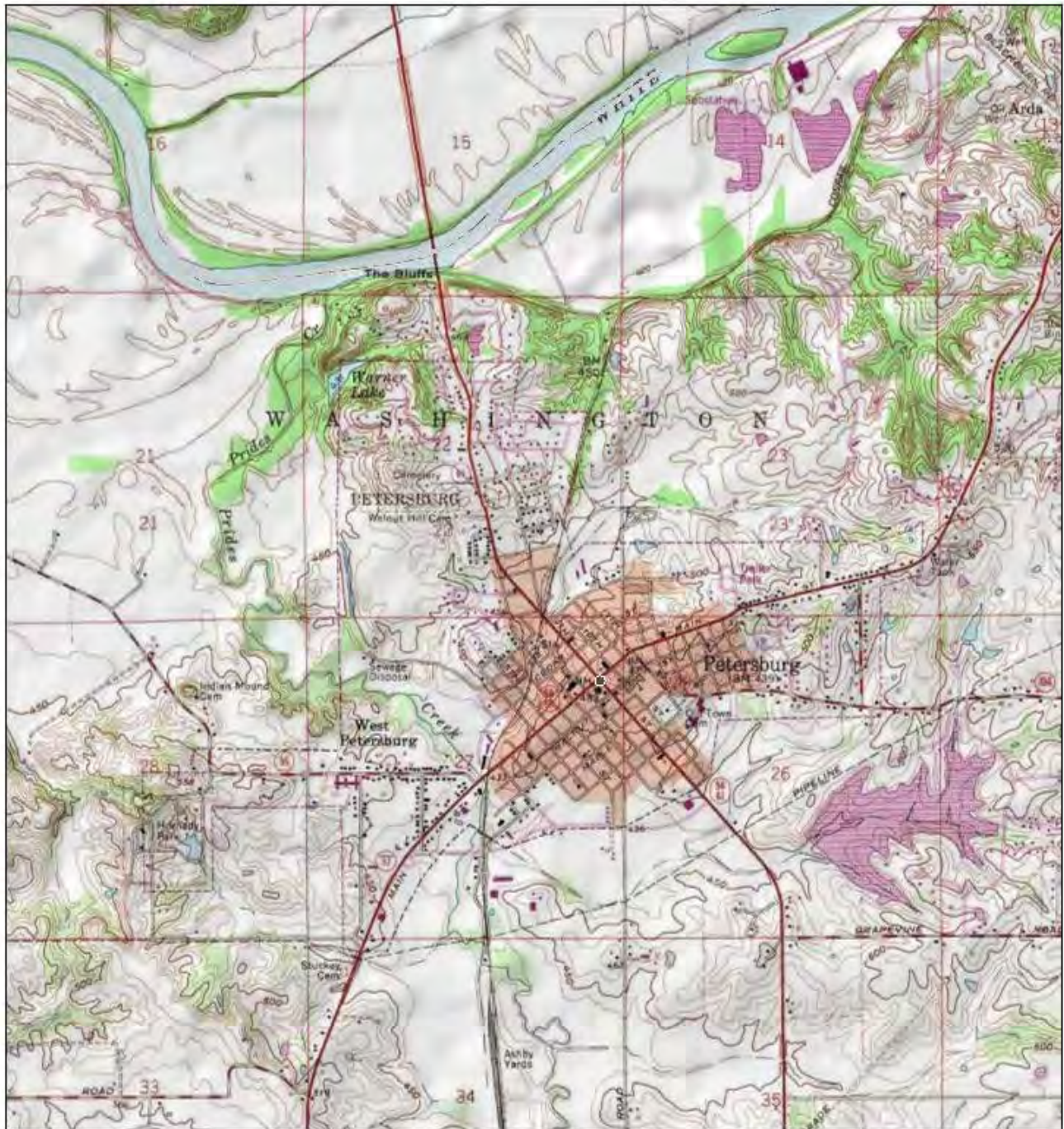
Floodplains - FIRM (Mar 2020)

- Floodway
- 1% Annual Chance Flood Hazard
- 0.2% Annual Chance, Protected by Levee
- 0.2% Annual Chance Flood Hazard
- NAIP Imagery (2018) Placeholder

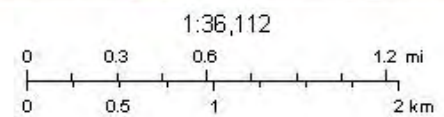


Indiana Department of Transportation (INDOT), U.S. Census Bureau (USCB),
Indiana Geographic Information Council (IGIC), UITS, Indiana Spatial Data
Portal
Federal Emergency Management Agency (FEMA), Indiana Department of
Natural Resources (IDNR)

Petersburg Topography



4/11/2023, 9:17:46 AM



Copyright © 2013 National Geographic Society, Forbed

Indiana DNR DHPA
2019 Indiana Dept of Natural Resources, DHPA

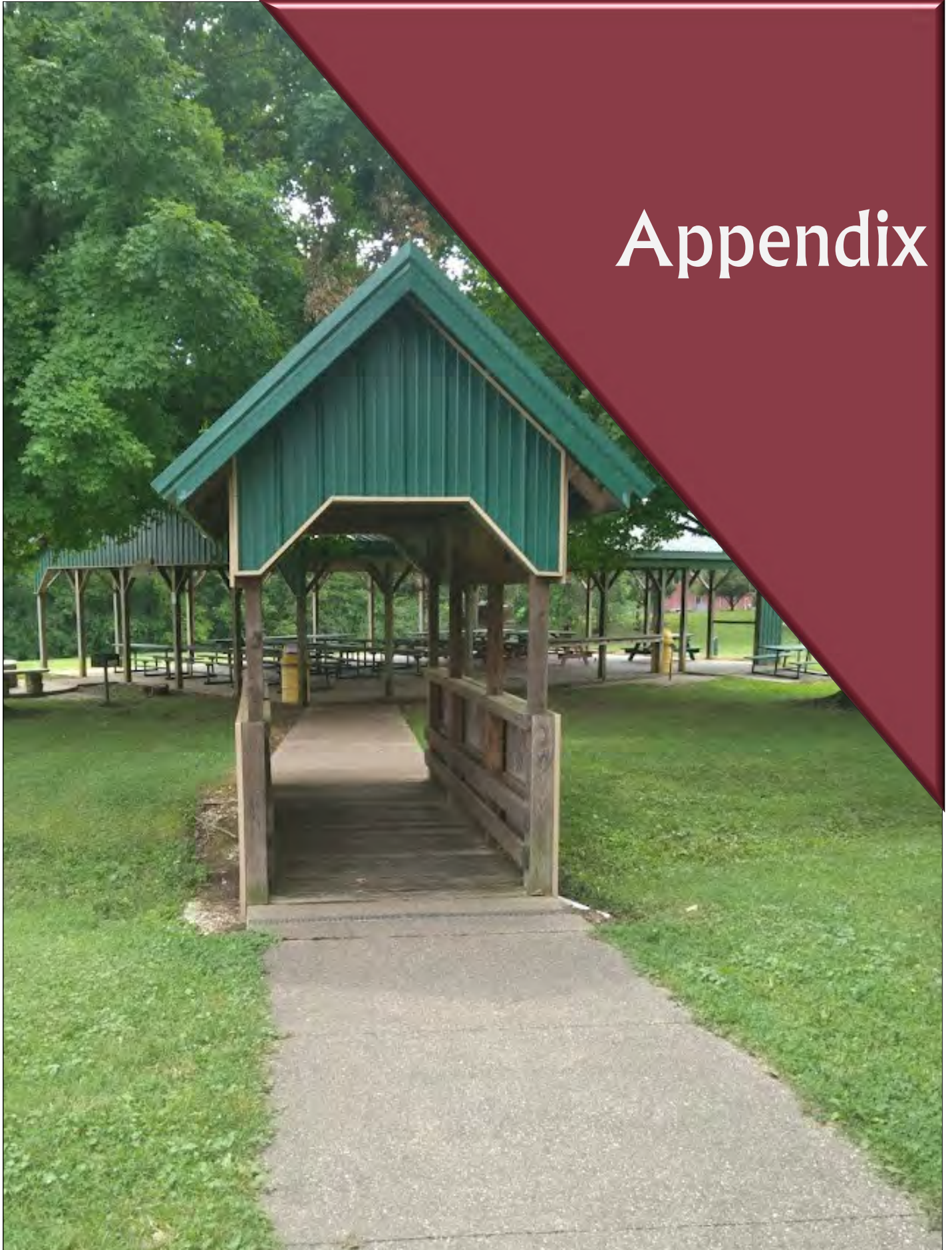


Project Priorities Listing

Action Plan Schedule

Year	Action	Cost Estimate	Potential Source of Funds
On-going	Install ADA accessible sidewalks throughout park connecting parking areas and all amenities	\$500,000 - \$1,000,000	Grant/Local
On-going	Plant new trees and landscaping	\$5,000	Grant/local
2024	Fundraise for park improvements & equipment	\$0	Volunteer
2024-25	Construct a new shelter house	\$75,000 - \$100,000	Grant/Local
2024-25	Develop a website	\$0 - \$5,000	Volunteer/Grant/Local
2024-25	Replace/add new picnic tables	\$10,000 - \$20,000	Grant/Local
2024-25	Add a summer concert and movie night series with food trucks/volunteer group tent concessions	\$5,000 - \$20,000	Grant/Local
2024-25	Add water fowl	\$2,500	Grant/Local
2024-25	Add concrete cornhole, upgrade horseshoe pits	\$50,000 - \$100,000	Grant/Local
2024-25	Develop a trail and park expansion plan	\$20,000 - \$30,000	Grant/Local
2024-25	Organize fitness classes	\$0	Volunteer
2025-26	Update current restrooms	\$20,000 - \$30,000	Grant/Local
2025-26	Fundraise for trail plan implementation	\$0	Volunteer
2025-26	Construct concession stand	\$0	Local
2025-27	Restore nature trail	\$0	Volunteer
2025-28	Organize cornhole and horseshoe tournaments	\$100 - \$1,000	Grant/Local
2026-28	Install additional playground equipment	\$75,000 - \$100,000	Grant/Local
2026-28	Trail Plan implementation	\$50,000 - \$200,000	Grant/Local
2026-28	Install additional playground equipment	\$75,000 - \$100,000	Grant/Local
2026-28	Plant trees	\$5,000	Grant/Local
2027-28	Research adding pickleball/pool	\$0	Volunteer

Appendix



Survey

Petersburg Park Plan Community Survey

1. Do you live in the City of Petersburg?

- ☐ Yes
☐ No

2. How many members of your household fall into each age range? List the total number of members per age range.

0-5	
6-12	
13-17	
18-21	
22-25	
26-39	
40-59	
60-74	
75+	

3. How many times a month did members of your household visit Petersburg parks during the summer?

- ☐ 1-5
☐ 6-10
☐ More than 10
☐ Daily
☐ None, please explain why.

4. What is your favorite activity at the park and why?

5. Are there any barriers that keep you from participating in recreational programs or activities sponsored by Petersburg parks?

- ☐ Yes
☐ No

If yes, what type of barriers?

6. What improvements would you like to see at Petersburg parks? What are the most important?

7. What additional recreational activities or facilities would you like to see added to current park operations?

8. What programs/family events would you like to see added to Petersburg parks?

9. Where and what types of trails would you like to see developed in Petersburg parks?

10. How would members of your household prefer to receive information about Petersburg parks?

- ☐ Text
☐ E-mail
☐ Website
☐ Other (please specify)

11. How would you rate the general maintenance and upkeep of Petersburg parks?

Unsatisfied Neutral Satisfied

12. What are the most convenient program times for you and others in your household?

- ☐ Morning
☐ Afternoon
☐ Evening
☐ Weekends

13. What can be done that would help you to participate in outdoor activities more often?

14. Do you have interest in satellite parks throughout town?

- ☐ Yes
☐ No

15. Do you have interest in fitness stations/parks?

- ☐ Yes
☐ No

16. Is there anything else you would like us to know?

Survey Question 4

Q4 What is your favorite activity at the park and why?

Answered: 85 Skipped: 6

#	RESPONSES	DATE
1	Taking lunch and eating in the tranquility.	10/18/2023 2:00 PM
2	Walking for exercise. Feeding the ducks.	10/18/2023 1:55 PM
3	Splash park and playground	10/3/2023 5:35 PM
4	We love how shaded the walking area is. We love the splash pad we also really enjoy the new playground	10/3/2023 10:33 AM
5	Walking dog Pretty, peaceful	9/29/2023 6:35 PM
6	Walking and Jogging; it's a nice area with clean roads and greenery	9/28/2023 10:22 AM
7	Parking and eating lunch.	9/11/2023 3:14 PM
8	walking and playground	9/11/2023 11:40 AM
9	Play set	9/10/2023 7:33 PM
10	Ducks watching	9/9/2023 4:43 PM
11	Splash park	9/6/2023 9:49 PM
12	The ducks	9/5/2023 5:37 AM
13	Walking. Nice safe scenic	9/4/2023 6:19 AM
14	Any	9/3/2023 8:59 PM
15	Running	9/3/2023 7:53 PM
16	Walking, Good exercise, beautiful scenery	9/2/2023 2:19 AM
17	Pickleball at Prides Creek	9/1/2023 11:54 PM
18	Walking and playing tennis	9/1/2023 7:00 PM
19	Walking around the pond was always nice. It made the town feel more rural and peaceful.	9/1/2023 6:57 PM
20	Christmas in the park, my kids love it. It has become a tradition.	8/30/2023 7:05 PM
21	Play ground my neice loves it. Wishes there was more to play on. Walking the road around the park gives a great exercise.	8/30/2023 9:37 AM
22	Fishing or walking	8/29/2023 2:52 PM
23	My kids love the playground and the splash pad	8/28/2023 3:32 PM
24	Splash park	8/28/2023 10:38 AM
25	splash pad, and lake Ashley. There is a stage at Hornady park that for as long as I have been a resident of pike County(my entire life), has had very small amount of use... book a band, have an open mic night, showcase our park with local talents!	8/26/2023 10:22 PM
26	Walking the dog	8/26/2023 4:33 PM
27	Walking/hiking	8/26/2023 11:08 AM
28	Picnics	8/26/2023 7:32 AM
29	Playground, fairgrounds, walking, water park, driving thru, activities	8/25/2023 5:14 PM
30	Running and biking	8/25/2023 9:21 AM

31	Playground Equipment and Splash Park	8/24/2023 4:14 PM
32	Walking.	8/24/2023 4:02 PM
33	Walk	8/24/2023 2:36 PM
34	Running	8/23/2023 9:18 PM
35	Splash pad and they prefer the playgrounds at Prides creek over Hornaday Park be neither are impressive. Prides Creeks are old and outdated and Hornaday Parks new one is more for toddlers.	8/23/2023 6:54 PM
36	Walking and sitting by the water	8/23/2023 3:40 PM
37	Fair	8/23/2023 1:07 PM
38	Jungle gym, water park	8/23/2023 12:01 PM
39	The fair	8/23/2023 11:42 AM
40	Walking	8/23/2023 10:42 AM
41	Picnic, birthday parties. The shelters are nice and affordable.	8/23/2023 10:40 AM
42	Spend time with family	8/23/2023 10:29 AM
43	camping	8/23/2023 10:10 AM
44	We are at Prides Creek OFTEN. Monkey bars & the Ark type areas are terrific for our grandkids. THEN, at HORNADY, I KNOW the PLAIN BARS, that they removed from Hornady are very missed. Kids loved that they could do flips on them... just plain, different levels like they had a small place for, was GREAT. WE MISS THEM ALOT! Benches around the play areas are great for us grandparents too.	8/23/2023 9:13 AM
45	Water pad	8/23/2023 9:07 AM
46	Trails and walking paths to exercise	8/23/2023 9:01 AM
47	Meeting with friends who do live in Pike County.	8/23/2023 8:54 AM
48	Walking	8/23/2023 8:52 AM
49	New equipment and splash park.	8/23/2023 8:48 AM
50	Walking because of the nice views along the walk.	8/23/2023 8:44 AM
51	Splash pad	8/23/2023 8:19 AM
52	Pickleball	8/23/2023 7:42 AM
53	water park	8/23/2023 7:36 AM
54	Walking	8/22/2023 10:16 PM
55	Playground and splashpark	8/22/2023 7:52 PM
56	Being able to walk and when kids were small the splash park	8/22/2023 5:36 PM
57	Walking	8/22/2023 4:28 PM
58	Cross country running	8/22/2023 4:25 PM
59	Walking/the playground/fair	8/22/2023 4:13 PM
60	None	8/22/2023 4:06 PM
61	Pride's Creek Pickle Ball court --- our teen loves it.	8/22/2023 4:06 PM
62	playground and waterpark for grandchild	8/22/2023 4:05 PM
63	Ride my bike, walk or run for exercise	8/22/2023 3:44 PM
64	Walking. It is a beautiful and safe place for walking.	8/22/2023 3:43 PM
65	Walking	8/22/2023 3:39 PM

66	Walk/Run Splash park	8/22/2023 3:32 PM
67	My kids enjoy the swings and slide.	8/22/2023 3:24 PM
68	Running	8/22/2023 3:23 PM
69	Don't have a favorite.	8/22/2023 3:23 PM
70	Visit Prides Creek to walk and play pickle ball	8/22/2023 3:21 PM
71	Hornady Park- the splash park, Prides Creek Park- golf, beach, and new shelter house.	8/22/2023 3:20 PM
72	disc golf, enjoy the game	8/22/2023 3:18 PM
73	my youngest play on the playground	8/22/2023 3:12 PM
74	Swings	8/22/2023 3:11 PM
75	Playground and Splash Park	8/22/2023 3:09 PM
76	Fishing at Prides Creek, no explanation needed we like to fish! lol	8/22/2023 3:09 PM
77	Walking	8/22/2023 3:05 PM
78	Kids love the playground	8/19/2023 7:34 PM
79	Playground equipment	8/18/2023 1:22 PM
80	The water park dearing the summer time just wish it was a lot bigger or maybe a pool or something and because my youngest love water! Dearing the fall time we love watching the ducks and because my youngest loves ducks	8/18/2023 12:24 PM
81	Fishing I love to fish	8/17/2023 1:37 PM
82	The new playground is great, The big shelter house is also a great space.	8/17/2023 11:06 AM
83	Playground and splashpark.	8/17/2023 11:03 AM
84	Walking trail around the area	8/10/2023 5:16 PM
85	Shelter house for picnic	8/9/2023 2:18 PM

Survey Question 6

Q6 What improvements would you like to see at Petersburg parks? What are the most important?

Answered: 69 Skipped: 22

#	RESPONSES	DATE
1	Toilets are deplorable - also a community building for parties, etc.	10/18/2023 2:00 PM
2	nicer restrooms	10/18/2023 1:55 PM
3	More playground equipment for older kids/adults	10/3/2023 5:35 PM
4	I think that the playground could use more shade. The equipment gets so hot by mid day it's unusable. I also think that a concrete path of some sort to the playground would help a lot of people especially moms with strollers. I think the covered bridge next to the pond could use some attention. I also think the park could use a few more things that smaller toddlers could play on.	10/3/2023 10:33 AM
5	Paved Biking/walking path to south of Petersburg, from back way to park to down 57.	9/29/2023 6:35 PM
6	The bathrooms need a serious update, and we need a restroom option for the winter months. Also the trail in the woods could use a lot of care.	9/28/2023 10:22 AM
7	I really don't know. I am happy with it.	9/11/2023 3:14 PM
8	The new playground is wonderful, but I would like to see more play toys for toddlers	9/11/2023 11:40 AM
9	More play equipment, especially for older kids, like 8 to 12.	9/10/2023 7:33 PM
10	More Ducks	9/9/2023 4:43 PM
11	Something for teens	9/5/2023 5:37 AM
12	Nice courts	9/4/2023 12:58 AM
13	Pickle ball courts	9/3/2023 8:59 PM
14	Maybe a running/biking trails. Cars don't pay much attention to pedestrians and it can be kind of unsafe to run at the park sometimes.	9/3/2023 7:53 PM
15	More activities	9/2/2023 2:19 AM
16	Pickleball courts	9/1/2023 11:54 PM
17	Better lighting for safety in hot aft park and the sidewalk to the park. And separate walkways for pedestrians	9/1/2023 7:00 PM
18	I'd like them to be a little more natural feeling. The tree line is extremely thin and feels artificial.	9/1/2023 6:57 PM
19	Do you need another big shelter house. Splash park needs a facelift Pickle ball!!!!	8/30/2023 7:05 PM
20	More play ground equipment.	8/30/2023 9:37 AM
21	At least one more set of bathrooms if you are walking around for exercise and need to stop.	8/29/2023 2:52 PM
22	More community based events would be nice, I love Petersburg, but it's a very quiet community and we often end up traveling for weekend activities to keep our kids and ourselves occupied	8/28/2023 3:32 PM
23	A place to get food/drinks while at park would be a nice improvement.	8/28/2023 10:38 AM
24	The stage needs to be utilized. It would bring performers and artist and individuals to a stage and allow locals to showcase their talents without much organizing. There could be painting classes held there. Cheap fun!	8/26/2023 10:22 PM
25	Wider asphalt with designated walking path.	8/26/2023 4:33 PM

26	Sidewalk to Prides Creek	8/26/2023 11:08 AM
27	More benches Bigger play area for toddlers These are important to us.	8/26/2023 7:32 AM
28	Better trail to the right of the park that isn't being used much.	8/25/2023 5:14 PM
29	Activities such as Pickle Ball and Sand Volleyball. I would also like to see more covered seating, signage for the FIT trail, water & dog water stations, and bike parking.	8/25/2023 9:21 AM
30	Updated bathrooms and additional walking trails.	8/24/2023 4:02 PM
31	Cleaner, updated restrooms	8/24/2023 2:36 PM
32	I would like to see a public swimming pool. We have to go to go out if county right now. Instead of supporting our county we have to support others. It would be nice to have playground equipment geared to older kids and not just toddlers	8/23/2023 6:54 PM
33	Better Bathroom Facilities	8/23/2023 1:07 PM
34	A pool like all surrounding towns. We need an actual pool.	8/23/2023 12:01 PM
35	Pike County NEEDS a real pool.....like it was supposed to get through Keifer's donation years ago. More than a splash park.	8/23/2023 11:42 AM
36	Safe wide walking paths	8/23/2023 10:42 AM
37	More room. It seems like the spots fill up quickly	8/23/2023 10:29 AM
38	more campsites	8/23/2023 10:10 AM
39	Closer parking or better walk path from parking. Consider older people going to the areas with kids.	8/23/2023 9:13 AM
40	Upgrade or expand water park	8/23/2023 9:07 AM
41	Maybe an open garden that people can volunteer to help maintain and the public is allowed to share and take produce home	8/23/2023 9:01 AM
42	Better defined walking path.	8/23/2023 8:54 AM
43	I like to see local bands play at the amphitheater.	8/23/2023 8:52 AM
44	Pickleball Courts and nature trail maintenance	8/23/2023 8:48 AM
45	Even more playground equipment, especially for older kids	8/23/2023 8:19 AM
46	An event center	8/23/2023 7:42 AM
47	more activities	8/23/2023 7:36 AM
48	Keep up the sidewalks	8/22/2023 10:16 PM
49	Pool	8/22/2023 5:36 PM
50	Better bathroom facilities	8/22/2023 4:28 PM
51	Updated signage	8/22/2023 4:25 PM
52	Have sports leagues for softball, kickball, whiffle ball, cornhole, and all other types of leagues.	8/22/2023 4:13 PM
53	I would love to see a pickle ball court at Hornady Park. The Splash Park and new equipment are great for the little kids, but the park doesn't have things to attract teens.	8/22/2023 4:06 PM
54	add swimming pool	8/22/2023 4:05 PM
55	I would love to see handicap accessible playground equipment.	8/22/2023 3:43 PM
56	Better restrooms, hiking/biking paths	8/22/2023 3:25 PM
57	N/A	8/22/2023 3:24 PM
58	Restroom improvements	8/22/2023 3:23 PM
59	Hornady Park- more equipment for kids over 6. Updated shelter houses. Prides Creek- updated playground equipment. Docks updated.	8/22/2023 3:20 PM

60	none	8/22/2023 3:18 PM
61	more shade. more nature like native trees and native gardens. less mowing.	8/22/2023 3:12 PM
62	Better bathrooms	8/22/2023 3:11 PM
63	More equipment and walking trails.	8/22/2023 3:09 PM
64	More equipment/phase 2 of new equipment. Very excited about this!	8/18/2023 1:22 PM
65	I wish the water park was like bigger or maybe turned into a pool or have a pool built with it, I wish there was more for younger kids like park wise, I wish there was like sitting areas for adults that have their kids out playing	8/18/2023 12:24 PM
66	More for kids to do	8/17/2023 1:37 PM
67	We need pickleball courts. Does not have to be at Hornady. Clean the grass out of the sidewalk to the City Park. The big shelter house is great, but there is only one of them. Would love to see a pavilion for bigger events.	8/17/2023 11:06 AM
68	Stroller accessibility.	8/17/2023 11:03 AM
69	More sidewalks so all people can navigate the park. Or bike paths.	8/9/2023 2:18 PM

Survey Question 7

Q7 What additional recreational activities or facilities would you like to see added to current park operations?

Answered: 61 Skipped: 30

#	RESPONSES	DATE
1	Decent restrooms.	10/18/2023 2:00 PM
2	A paved walking path to keep people off the roadway and dam.	10/18/2023 1:55 PM
3	Sports leagues	10/3/2023 5:35 PM
4	Maybe extending the road or adding a sidewalk so when walking or pushing a stroller feels a little more safe when cars pass by. I know it would be expensive and alot to ask but a bathroom closer to the new playground would be nice.	10/3/2023 10:33 AM
5	Shady dog park at Hornady	9/29/2023 6:35 PM
6	More trails, tennis court	9/28/2023 10:22 AM
7	If money was no concern, a swimming pool in the low area behind the splash park would give the town something nice, but it would cost and keep costing.	9/11/2023 3:14 PM
8	A fitness destination for all ages	9/11/2023 11:40 AM
9	Pull up bars, signs marking distances for runners or walkers, areas to do pushups or situps, for adults exercising at the park.	9/10/2023 7:33 PM
10	Pickle ball courts	9/6/2023 9:49 PM
11	Pickleball	9/4/2023 6:19 AM
12	Swimming pool	9/3/2023 8:59 PM
13	pickelball	9/2/2023 2:19 AM
14	Pickleball courts	9/1/2023 11:54 PM
15	Tennis/pickleball courts. The tennis courts by the health department need to be resurfaced	9/1/2023 7:00 PM
16	Pickle ball league Trails to connect the playground to the shelters Coed softball league Open gym at OPG	8/30/2023 7:05 PM
17	At the shelter houses small area of play ground equipment. Like the one by the cabin.	8/30/2023 9:37 AM
18	Maybe my answer for number 6 was a facility answer for number 7 ~	8/29/2023 2:52 PM
19	- Additional satellite parks around town, would add more outdoor space for residents, more activities and would make use of the various empty and abandoned lots around town - More family events at the park that would get kids out of the house and engaged in their communities - More fitness based activities and items, most parks now have work out equipment and I don't think ours does but I may be wrong	8/28/2023 3:32 PM
20	Equipment for older kids/bike- friendly trails	8/28/2023 10:38 AM
21	Additions to the peter Brenton cabin area. Such as more cabins or buildings showing heritage and lifestyle of elders. More gatherings for all.	8/26/2023 10:22 PM
22	Sidewalk to Prides Creek	8/26/2023 11:08 AM
23	Added area at the splash park Walking path throughout the park grounds	8/26/2023 7:32 AM
24	Concrete ping pong table and rock climbing wall.	8/24/2023 4:02 PM
25	Public pool	8/24/2023 2:36 PM
26	Skate Park	8/23/2023 9:18 PM

27	We need a public pool	8/23/2023 6:54 PM
28	Swimming Pool	8/23/2023 1:07 PM
29	POOL	8/23/2023 11:42 AM
30	Amphitheater/venue for concerts and events	8/23/2023 10:42 AM
31	pickle ball, walking/hiking trails, bike trails.	8/23/2023 10:40 AM
32	Walking and biking trails	8/23/2023 10:29 AM
33	boat rental	8/23/2023 10:10 AM
34	Things to improve groups is great.	8/23/2023 9:13 AM
35	Toddler area	8/23/2023 9:07 AM
36	Options for sport leagues for adults	8/23/2023 9:01 AM
37	Pickleball, horseshoe pit, cornhole area, tetherball, volleyball, badminton, wiffleball, kickball, tournaments in these things, and maybe labeling the different trees and plants along the nature trail.	8/23/2023 8:48 AM
38	More/better sand volleyball courts	8/23/2023 8:44 AM
39	An event center for weddings	8/23/2023 7:42 AM
40	playground expansion	8/23/2023 7:36 AM
41	Pickle ball court	8/22/2023 10:16 PM
42	Pool or wading pool for splash park better access and nicer bathrooms	8/22/2023 5:36 PM
43	City pool, event center	8/22/2023 4:25 PM
44	softball, kickball, whiffle ball, cornhole, and all other types of leagues. A bike trail and a running trail.	8/22/2023 4:13 PM
45	Pickle ball, tennis	8/22/2023 4:06 PM
46	swimming pool	8/22/2023 4:05 PM
47	Kayaking	8/22/2023 3:43 PM
48	Swimming pool and pickleball courts	8/22/2023 3:32 PM
49	N/A	8/22/2023 3:24 PM
50	It would be great if you could add a skatepark!	8/22/2023 3:23 PM
51	pool	8/22/2023 3:18 PM
52	designated walking/biking paths.	8/22/2023 3:12 PM
53	Skating area for rollerblading	8/22/2023 3:11 PM
54	I wish we had a public pool, I think it would be a huge hit especially with all school aged kids	8/22/2023 3:09 PM
55	Disc golf course	8/19/2023 7:34 PM
56	Would love to see an urban park in downtown area. Could bring in dollars to downtown businesses. People could grab a coffee or food and walk to the park for kids to play. Would increase walking activity as well!	8/18/2023 1:22 PM
57	Maybe a all year round concession stand, maybe a pool, paddle boats maybe for the lake, all free like the park has always been AND NEW BATHROOMS MAYBE A COUPLE	8/18/2023 12:24 PM
58	Kids water toys	8/17/2023 1:37 PM
59	The basketball and tennis courts (school-owned) are in very bad condition.	8/17/2023 11:06 AM
60	Pickleball	8/17/2023 11:03 AM
61	Skate park	8/9/2023 2:18 PM

Survey Question 8

Q8 What programs/family events would you like to see added to Petersburg parks?

Answered: 40 Skipped: 51

#	RESPONSES	DATE
1	Concerts, holiday theme events - such as 4th of July celebrations.	10/18/2023 2:00 PM
2	Exercise/health programs	10/3/2023 5:35 PM
3	Movies in the park during the summer and fall. A few weekends during the Christmas lights horse and sleigh rides. Hosting a craft/antiques show. Trunk or treat at the park.. and also a hayride and maybe in the woods or having a "haunted trail" possibly talking to one of the farmers near the park in having a corn maze.	10/3/2023 10:33 AM
4	Don't know	9/11/2023 3:14 PM
5	Live music	9/9/2023 4:43 PM
6	Movie nights	9/3/2023 8:59 PM
7	Pickleball tournaments	9/1/2023 11:54 PM
8	PRIDE in the park	9/1/2023 7:00 PM
9	Food trucks and music events. This could also be downtown.	8/30/2023 7:05 PM
10	Music (Christian)	8/30/2023 9:37 AM
11	- Movie night in the park - Community barbeques - Harvest/fall festivals in the park - Family scavenger hunts - Kite flying in the park - RC boat races - Community fitness challenges - Community art in the park, members of the community could make and display their art - Chalk Walk - community field day (inflatables, tug of war, games, food, etc.) - yoga in the park - have the dnr come out and bring some local animals for kids to see and learn about	8/28/2023 3:32 PM
12	Some kind of biking activities	8/28/2023 10:38 AM
13	Concerts, open mic nights, painting in the park, marathon through the park, building of more cabin like buildings to showcase pike County/petersburg history or residents..	8/26/2023 10:22 PM
14	Maybe a music concert.	8/26/2023 4:33 PM
15	NA	8/26/2023 11:08 AM
16	Live music	8/26/2023 7:32 AM
17	Group recreational clubs and sporting events	8/25/2023 9:21 AM
18	Concerts and outdoor movies.	8/24/2023 4:02 PM
19	More Concerts	8/23/2023 1:07 PM
20	Concerts, car shows, carnivals.	8/23/2023 11:42 AM
21	Family fun nights	8/23/2023 10:42 AM
22	During nice weather it would be so cool to have exercise groups somewhere. ***Any chance for outdoor movie nights or music events?	8/23/2023 9:13 AM
23	More family activities	8/23/2023 9:07 AM
24	Church sermons, tournaments, cookouts, and soap box car races.	8/23/2023 8:48 AM
25	Movie night	8/23/2023 8:19 AM
26	Family parks, many induce food trucks. bring a blanket	8/22/2023 10:16 PM

27	community wide talent show, cultural food festival, skill development and training events, community garden that residents can all help take care of and use, community clean up event, open mic night for jokes and singing.	8/22/2023 4:13 PM
28	Arts Festival	8/22/2023 4:05 PM
29	Monthly praise and worship in the evening	8/22/2023 3:43 PM
30	N/A	8/22/2023 3:24 PM
31	pool	8/22/2023 3:18 PM
32	more nature things	8/22/2023 3:12 PM
33	Music in the park would be awesome!	8/22/2023 3:11 PM
34	An event center to host dinners, receptions, large meeting groups, etc.	8/22/2023 3:05 PM
35	Art in the park, music	8/18/2023 1:22 PM
36	Haunted house maybe	8/18/2023 12:24 PM
37	More community cookouts	8/17/2023 1:37 PM
38	Live Music	8/17/2023 11:06 AM
39	Recreational leagues	8/17/2023 11:03 AM
40	Art shows, monthly programs, ie puppet shows, movies, music.	8/9/2023 2:18 PM

Survey Question 9

Q9 Where and what types of trails would you like to see developed in Petersburg parks?

Answered: 55 Skipped: 36

#	RESPONSES	DATE
1	Something for every walker & runner.	10/18/2023 2:00 PM
2	Restore the nature trail.	10/18/2023 1:55 PM
3	Walking/biking	10/3/2023 5:35 PM
4	Hiking	9/29/2023 6:35 PM
5	More hiking trails in woods	9/28/2023 10:22 AM
6	Unsure	9/11/2023 3:14 PM
7	I would like to have hiking trails.	9/10/2023 7:33 PM
8	Bike trails	9/9/2023 4:43 PM
9	Bike	9/5/2023 5:37 AM
10	Walking	9/4/2023 12:58 AM
11	Hiking trails	9/3/2023 8:59 PM
12	nature trails	9/2/2023 2:19 AM
13	Any	9/1/2023 11:54 PM
14	Would love to see walking trails in or around homady park	9/1/2023 7:00 PM
15	Cannot follow the fitness trail signs... some are missing	8/30/2023 7:05 PM
16	In the woods more trails	8/30/2023 9:37 AM
17	I think the trails at Homady Park could be better utilized, I don't think many people use them or know about them, but they are nice trails and could be a good asset to the park	8/28/2023 3:32 PM
18	bicycle	8/28/2023 10:38 AM
19	The trails that are in place now are great. There could be more trails without being huge plots of land. The lots in town owned by the city could be turned into great places for the citizens of pike to enjoy lunch, have a picnic, instead of mowing unused land weekly and it sitting as an empty lot for years...	8/26/2023 10:22 PM
20	Walking/hiking trails	8/26/2023 4:33 PM
21	Sidewalk to Prides Creek	8/26/2023 11:08 AM
22	Walking	8/26/2023 7:32 AM
23	Any and all new trails would be terrific! Preferably paved	8/25/2023 9:21 AM
24	Hiking trails that are off road.	8/24/2023 4:02 PM
25	More nature trails	8/24/2023 2:36 PM
26	Connect city sidewalks to Prides Creek	8/23/2023 9:18 PM
27	Don't Know	8/23/2023 1:07 PM
28	Need a walking Greenway from town to prides creek.	8/23/2023 12:01 PM
29	bike trails	8/23/2023 11:42 AM

30	Walking, biking, jogging paths	8/23/2023 10:42 AM
31	Mountain bike trails would be cool.	8/23/2023 10:40 AM
32	Walking and bike trails	8/23/2023 10:29 AM
33	hiking	8/23/2023 10:10 AM
34	Options for short ones & not just long ones!!!	8/23/2023 9:13 AM
35	Dog friendly trail	8/23/2023 9:07 AM
36	Maybe for bicycles	8/23/2023 9:01 AM
37	Improved and maintained nature trail	8/23/2023 8:48 AM
38	Walking trails	8/23/2023 8:19 AM
39	More hiking trails would be nice	8/22/2023 5:36 PM
40	Walking trails	8/22/2023 4:28 PM
41	running/walking, bikes	8/22/2023 4:13 PM
42	Hiking trails of various skill levels	8/22/2023 3:43 PM
43	Walking and bike trails	8/22/2023 3:32 PM
44	hiking/biking	8/22/2023 3:25 PM
45	N/A	8/22/2023 3:24 PM
46	any	8/22/2023 3:18 PM
47	dedicated walking or biking paths.	8/22/2023 3:12 PM
48	Wooded, shaded walking paths	8/22/2023 3:11 PM
49	Hiking/Nature trails	8/22/2023 3:09 PM
50	Nature trail running along creek connecting to pedestrian bridge	8/18/2023 1:22 PM
51	Not sure	8/18/2023 12:24 PM
52	More trails lol I love hiking trails going everywhere	8/17/2023 1:37 PM
53	Many of the signs for the current fitness trail are gone... not sure you can follow the route anymore.	8/17/2023 11:06 AM
54	Connect Hornady Park to Prides Creek, that also allows for bikes.	8/17/2023 11:03 AM
55	Walking and biking trails.	8/9/2023 2:18 PM

Survey Question 13

Q13 What can be done that would help you to participate in outdoor activities more often?

Answered: 30 Skipped: 61

#	RESPONSES	DATE
1	Having activities at the park.	10/3/2023 5:35 PM
2	I think they town does a good job the only time we don't attend is because we have a younger child so it just depends on time and weather.	10/3/2023 10:33 AM
3	Above mentioned paved path- back way to park, south on 57, then cut off to 61... a big Greenway around the co.munity for biking, walking.	9/29/2023 6:35 PM
4	Make me younger LOL	9/11/2023 3:14 PM
5	Include the school groups and clubs	9/11/2023 11:40 AM
6	Later hours for activities	9/3/2023 8:59 PM
7	Add pickleball courts	9/1/2023 11:54 PM
8	?	8/30/2023 9:37 AM
9	Weekend activities, we are a family with two parents who work full time during the week, when I see the library and town offering activities for young kids, they tend to be only offered during the week or early morning hours Disability friendly activities, one of my sons has cerebral palsy and I know there are many other disabled kids at the school in his special needs class, I don't see a ton of disability friendly activities in our community or our area at all. It would be nice to be able to offer the families of disabled kids a chance to let their kids have fun being themselves and allow their parents to network and get to develop a community of people with similar experiences.	8/28/2023 3:32 PM
10	Better basketball area, possibly pickleball court. Sidewalks addressed to smooth all the way to the park.	8/26/2023 10:22 PM
11	NA	8/26/2023 11:08 AM
12	Walking paths for those in wheelchairs	8/26/2023 7:32 AM
13	Time flexibility.	8/24/2023 4:02 PM
14	Nothing Really	8/23/2023 1:07 PM
15	A pool	8/23/2023 11:42 AM
16	Make it like the jasper parklands with an event center and walking trails	8/23/2023 10:29 AM
17	Less walking distances from parking areas.	8/23/2023 9:13 AM
18	More water	8/23/2023 9:07 AM
19	Being made aware of them.	8/23/2023 8:48 AM
20	Something for the whole family	8/22/2023 4:28 PM
21	HAVE MORE!!!! There is SOOOOO much more that we could do.	8/22/2023 4:13 PM
22	Add a swimming pool	8/22/2023 3:32 PM
23	Attractions/events	8/22/2023 3:24 PM
24	closer to my home	8/22/2023 3:18 PM
25	not sure	8/22/2023 3:12 PM
26	Mailing list of activities	8/22/2023 3:11 PM
27	Kid friendly for all ages	8/18/2023 1:22 PM
28	More activity's around Petersburg to do with kids	8/18/2023 12:24 PM
29	Raise awareness, more online presence.	8/17/2023 11:03 AM
30	More shaded areas and sidewalks	8/9/2023 2:18 PM

Survey Question 16

Q16 Is there anything else you would like us to know?

Answered: 37 Skipped: 54

#	RESPONSES	DATE
1	We have a beautiful park. It would be great to see it full all the time.	10/18/2023 2:00 PM
2	Park is rather shabby - lake needs weed eating & vegetation controlled. Flower beds need weeded. Dead & dying trees need to be removed. Limbs reaching to the ground should be cut off at the trunk. More manpower.	10/18/2023 1:55 PM
3	Would love a fitness playground/area in the park for adults, plus large enough for small group fitness classes to be held out there!	10/3/2023 5:35 PM
4	No, just saying that a satellite park sounds like a green area with a picnic table. Interesting idea.	9/11/2023 3:14 PM
5	A small playground near the dog park would be useful. It would be nice for families to be able to walk their dogs to the park and let their children play near by.	9/11/2023 11:40 AM
6	Add pickleball courts please	9/1/2023 11:54 PM
7	We love the care that goes into our parks	9/1/2023 7:00 PM
8	The park is beautifully maintained	8/30/2023 9:37 AM
9	Hornady Park is a beautiful and fantastic asset for our community. I think additional activities and events would be another boon for our town. I also think smaller satellite parks throughout town would be a good idea. The large empty plot of land along E 9th street, across the street from the car wash, could be a great spot, the area is currently empty and is in a good central location, near family neighborhoods and the school, making it accessible to families with young kids living on the farther side of town away from the current park.	8/28/2023 3:32 PM
10	As a 40 year resident, I would like to see EVERYONE included! All ages, all races, orientation. We are a growing city stuck in the mindset of a small town. The #1 thing that needs to happen is maintenance! Second is another smaller park with a shelter and some kid friendly toys/swings. The trek to Hornady with a stroller and a toddler on a bike takes too long to get out there. When we arrive it is time to try to make it back home. It is tiring! Put a park in town! There are supplies and items used to beautify main Street that are just being sat around. Why would we not put flowers in them and put them in the park? Or on 9th street where most people come into town. It's (all of petersburg) sidewalks are in disarray.	8/26/2023 10:22 PM
11	Try to expand the property north into the woods and east, enlarging Hornady Park.	8/26/2023 4:33 PM
12	NA	8/26/2023 11:08 AM
13	Need small venues for live events.	8/26/2023 7:32 AM
14	Our new playground is awesome! We have a very nice park that is utilized a lot. The Peter Brenton Cabin is also an asset.	8/25/2023 5:14 PM
15	Keep up the great work! We love our little community	8/25/2023 9:21 AM
16	No	8/24/2023 4:02 PM
17	I think prides creek should be free for tax payers in the county. We already pay taxes to keep the park up why do we have to pay to get in as well?	8/23/2023 6:54 PM
18	No	8/23/2023 1:07 PM
19	No	8/23/2023 11:42 AM
20	When our kids were much younger we would visit Hornady Park more often because they would play on the playgrounds and splash park. Now since they are older there is not as much to do for our family since they have outgrown the playground equipment and not as interested in the splash park.	8/23/2023 10:40 AM

21	no	8/23/2023 10:10 AM
22	Can't answer on fitness station parks as I don't know what that is..? Sounds interesting though.	8/23/2023 9:13 AM
23	Dog park area	8/23/2023 9:07 AM
24	The fitness stations/park would be a benefit for those that live in town and can not afford to go to the gym. It also let people of all ages to participate. It would also be a good change for those that go to the gym and have a change of scenery. It would be nice to have things for the youth to do there as well.	8/23/2023 8:52 AM
25	Keep up the good work!	8/22/2023 10:16 PM
26	No	8/22/2023 4:25 PM
27	The new playground looks great.	8/22/2023 3:32 PM
28	N/A	8/22/2023 3:24 PM
29	is the a Petersburg resident specific survey, or a survey for Pike County residents?	8/22/2023 3:18 PM
30	can't think of any currently	8/22/2023 3:12 PM
31	I wish you hadn't taken out the old playground equipment. I hope the new playground equipment is maintained.	8/19/2023 7:34 PM
32	No	8/18/2023 1:22 PM
33	I think Petersburg needs something kids can have fun all year round instead of just the warm days I think they should build a cheap inside playground or something	8/18/2023 12:24 PM
34	Keep up the good work	8/17/2023 1:37 PM
35	I see fitness stations at park all across Indiana. I never see them in use. I think Satellite Parks a good idea if they can be in neighborhoods. Hornady Park is fantastic, but it is not convenient to get to. I think the White River is an undeveloped asset. Can anything be done at the Old Water Plant or Moose Ballfield?	8/17/2023 11:06 AM
36	I'd like to see a skatepark somewhere, for teens. Also rehabilitation for the tennis/basketball courts at OPG.	8/17/2023 11:03 AM
37	Overall a wonderful park.	8/9/2023 2:18 PM

Sources

- [census.gov](https://www.census.gov)
- Discover Downtown Petersburg Facebook page
- Hornady Park Petersburg Indiana Facebook page
- [purdue.edu](https://www.purdue.edu)
- [in.gov](https://www.in.gov)
- [HMdb.org](https://www.HMdb.org)
- [aesindiana.com](https://www.aesindiana.com)
- [washtimesherald.com](https://www.washtimesherald.com)
- [wikipedia.org](https://www.wikipedia.org)
- National Register of Historic Places
- Soil Survey of Pike County, IN
- The Press-Dispatch

